

Nannup



Nannup  
Community Resource Centre  
*Your local connection*

# TELEGRAPH

10 Warren Road Nannup WA 6275

E-mail: [nannup@crc.net.au](mailto:nannup@crc.net.au)

Ph (08) 9756 3022  
[www.nannup@crc.net.au](http://www.nannup@crc.net.au)

**November Telegraph deadline**  
**Friday 17th October 2014**

**October 2014**



Photos supplied by Jo Homer  
See page 32 for article

## INSIDE THIS MONTH

Pg 3	Community Resource Centre Services Update
Pg 12	South West Foodbowl Festival Information
Pg 14	Nannup Community Kitchen 1st Birthday
Pg 16	Health Pages
Pg 19	Small Landholder News
Pg 20	Lisa Mahoney Nature Article
Pg 21	Bird Watch & Our Wild Flora Neville & Val Tanner
Pg 22	Backyard Buddies
Pg 24	Nannup Volunteer Resource Centre News
Pg 28	Historical Society Pages Neville Tanner
Pg 31	Nannup Police Report
Pg 33	Community Diary Dates
Pg 36	NDHS News
Pg 37	6275 Youth/Kids
Pg 38	Poetry Corner
Pg 39	Classifieds
Pg 40	Telegraph on Tour
Pg 44	Nannup Shire Notes

## Do you need to access Government information?

*The Nannup CRC have a  
FREE self – serve  
Government/Centrelink computer  
available for use @ 10 Warren Rd*

## Nannup Telegraph

*Please feel free to contact CRC staff with any  
stories, articles,  
advertising and diary events.*

*We would really like to hear from you!*

**The views expressed by the contributors and  
advertisers to the newspaper do not necessarily  
reflect those of the Nannup CRC or its staff.**

- Contributions are accepted subject to editor's approval.
- We reserve the right to increase advertising size if space permits.
- We reserve the right to reduce article size if space is limited.

## LETTERS TO THE EDITOR

Dear Editor,

A BIG thank you to Welcome back Neville Tanner with his much loved Historical write-ups and to Neville and Val for the Flora and Bird watch pages. These have been surely missed.

Jim Green  
Nannup

Dear Editor,

It's great to have Val and Neville Tanner back in the Telegraph. Thanks very much for including their articles once again.

Margaret Gibb

## ACROSS THE DESK

Spring has Sprung and another time of change comes to light! As we farewell Rachel Tyrrell, editor of the Nannup Telegraph for the past three and a half years, we wish her happy travels on a journey yet to be discovered and all the best while you take leave from your CRC family. In a different light, we at the Nannup CRC look forward to a progressive journey with you our readers and will endeavour to keep bringing the highest quality (thanks again Rachel) coverage of community 'happenings' and awareness in our beautiful town of Nannup. Happy Spring every one!

**CRC Telegraph Team**



**Get Your Next  
Pre-Paid  
Phone or Wireless BB Credit  
at the CRC**

**\$20, \$30, \$40, \$50 \$60, \$100 available**

## WANT TO INCLUDE A LETTER TO THE EDITOR?

We are more than happy to include letters to the editor free of charge (subject to editor's approval), but we only have limited space available so please remember to keep your letters to a maximum of **350** words. If letters exceed this, please be aware that they will be edited and the CRC will not take responsibility to which part.

Letters to the editor must be received before the deadline and have name, a contact phone number and address for verification before letters will be published.

**The views expressed by the contributors to the newspaper do not necessarily reflect those of the Nannup Community Resource Centre or its staff.**



## Update October 2014

Recent changes to CRC funding by the Department of Regional Development (DRD) has resulted a change to the services delivered by the Nannup CRC and it has also resulted in a reduction of funding to the Nannup Community Resource Centre by \$34,000 over the next 12 months. This has meant we have had to re-assess a number of activities and services we provide to ensure they meet our contractual obligations.



### CRC Traineeships

Unfortunately, one of the main areas of funding reduction has been in the financial support to our Traineeship program. This will mean we will not be advertising for a Trainee position in 2015 (and it will be the first year we have not done so in 12 years.) It is anticipated that a Full Time Traineeship at the CRC will be offered in 2016.

### Visitor Services

With the support of the Shire of Nannup the Nannup Community Resource Centre has been providing a comprehensive 7 day a week Visitor Information Service in conjunction with A Taste of Nannup since February 2013 after the Nannup Tourism Association closed its doors in July 2012. The Nannup CRC Visitor Service has provided general visitor information, development of information fliers and brochures, redevelopment of Nannup map, accommodation bookings via Bookeasy, development and installation of a dedicated 24x7 touch screen interactive computer for visitor enquiries and bookings, networking with Tourism support agencies, ticketing and Tourism promotion activities. During this time the CRC has responded to 3,564 walk-in visitors and many more phone, email and mail enquiries. The CRC contributed \$30,000 of its own funds to provide a Visitor Information service during 2013-14.

It was anticipated that the Nannup Community Resource Centre would apply for Visitor Centre Accreditation over the next 12 months, and we were grateful to receive a commitment of \$10,000 by the Shire of Nannup to assist in obtaining accreditation. However, with the reduction of core funding from DRD, Council not being in the position to contribute funding for the operation of a Visitor Information service, and the CRC is not having access to alternative funding required to maintain the service, the Nannup CRC committee has reluctantly decided it can no longer provide a full Visitor Information service to standard expected by the Tourism industry, its clients and visitors using this service, without jeopardizing other much needed CRC services. It is hoped that by moving out of this area, it will create an opportunity for a Nannup tourist based organisation or business to take up delivering a full visitor information service (eg. ATON or new Caravan Park leaser).

### Other CRC Services

By discontinuing our full Visitor Information service, we have ensured we will continue to deliver a number of our other services including printing and distribution of the Nannup Telegraph, Broadband for Seniors computer access, Centrelink information point, Community Telephone Directory, Book Nook and meeting room/office space for community groups. In addition, over the next 9 months, we will be hosting a number of Economic, Business and Social Initiatives funded through the new arrangements with DRD. These include:-

- Facebook for Business (to be held in October);
- Marketing;
- Business Planning and
- Financial Management for Businesses.

#### Other activities include

- How to use an ipad/tablet
- Make your Own Photo-book online (November/December)
- Food Sensations program (starts 16<sup>th</sup> October & its FREE)
- Snake Handling – what not to do
- Cyber Bullying Awareness workshop

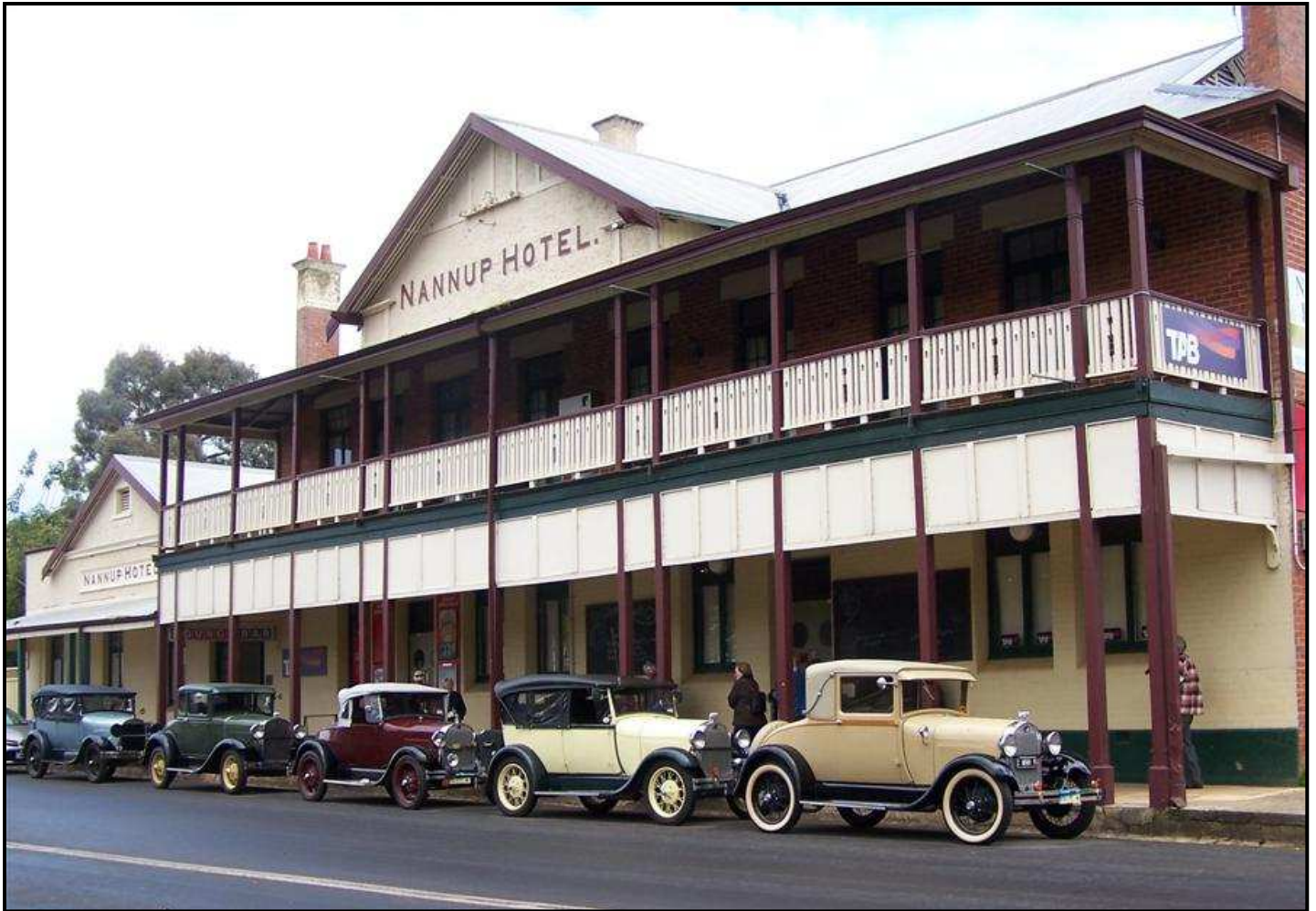
If you are interested in any of the above, please contact the CRC on 9756 3022 or [nannup@crc.net.au](mailto:nannup@crc.net.au)

### CRC Staff

Our very dedicated Telegraph Editor, Rachel Tyrrell, is taking some well-earned leave to get out and about to explore the country... She is now our roving CRC reporter in the bush... (The CRC staff that are left behind are very envious!). In the meantime, if you have any Telegraph or Community Resource Centre enquiries, please contact SueClaire, Jen, Cate or myself.

*Cheryle Brown—Nannup Community Resource Centre Manager*

## Rally by the Seaside comes to the Forest.



*Pic by Neville Tanner*

The honking of the old car horns alerted the towns people of Nannup to the recent visit of 5 beautifully restored Model A Fords.

The drivers and their cars were here from all over Australia and the world, to take part in the 23rd Australian Model A Meet. As well as Nannup, the cars and drivers travelled through many towns within the South West including Margaret River, Augusta, Yallingup and spent the day on the Busselton Foreshore and Dardanup Heritage Park.



*Story and pics  
by Jen Bornitici*





**GIRLS  
NIGHT  
IN**

# 80's ball



RSL Hall  
18th Oct, 7pm  
BYO drinks

No need to buy an expensive dress, see what you can get from the op shops, think outside the box, find what you have at home but please try and add a bit of pink to your style



Contact Jacinta for ticket sales or  
purchase at the door  
042 796 2073 or 97560602

\$15.00 tickets gets you in the door with a glass of champagne on arrival. There will be a DJ, games, prizes, raffles and lots of fun on the night

## Nannup Telegraph Advertising Rates

### Community

Community group events up to 1/4 page FREE

### Private ads

Small classifieds	
(For sales, b'days, thank you's etc.)	\$ 5.50
9.5cm x 7cm	\$11.00
9.5cm x 13.5cm	\$20.00

### Business/Commercial\*

9.5cm wide x 6cm high	\$33.00
9.5cm wide x 7cm high	\$44.00
9.5cm wide x 9.5cm high	\$55.00
1/4 page 9.5cm x 13.5cm or 19cm x 6.5cm	\$77.00
1/2 page 19cm x 13.5cm or 9.5cm x 27cm	\$99.00
Full page 19cm x 27cm	\$121.00

\* Business members' discount 10%

## Would you like to subscribe to this newspaper?

We deliver free to Nannup residents. If you live outside the area you can still have the *Nannup Telegraph* delivered each month by registering your details at the CRC

\$38.50 for one year's subscription.  
(Australian addresses only)

Phone 9756 3022

or e-mail [nannuptc@crc.net.au](mailto:nannuptc@crc.net.au)

or post your cheque and mailing details to:  
**Nannup Community Resource Centre**  
10 Warren Road  
Nannup WA 6275

## 2014/15 COMMUNITY DIRECTORY IS SELLING FAST!

### TIME TO UPDATE THAT OUTDATED COPY

Before they are sold out!

Thanks to all the businesses who supported the 2014/15  
Nannup Community Directory.

ONLY \$5, with all funds raised going towards the  
Nannup P&C.

*Now selling at Nannup CRC and the Nannup Newsagency,  
get yourself a copy for the home, office or workplace.*



## SWAMPY SOUNDS

All the way from the Land of the Long White Cloud, the mesmerising duo were back performing at the Nannup Town Hall on Friday 12<sup>th</sup> September, as part of their whirlwind tour of the West. Swamp Thing, supported by local talent Tank 7 and Leoh, ensured the crowd was treated to a brilliant evening of music. Michael Barker, although nursing a head cold, was still able to wow the crowd with his simultaneous drums and key playing spectacular. The duos blues, roots and deep groove sound had the crowd on their feet stomping out to the unique sound.



Michael Barker



Grant Hava

We were also treated to more local talent with Sean, from Djembemoves, gracing the stage displaying the signature bass drum rhythmic sounds, blending hypnotically and perfectly with the soulful hypnotic sound of the Swamp Thing.

The gig was made possible through the collaboration of local musician Gary Dobbin (Tank 7), Nannup Music Club and Nannup Cricket Club. Thanks for bringing your soulful blues again to the southwest.

*Story and Pictures by Linda Marle.*

## ATTENTION CATTLE PRODUCERS

*A great service for  
cattle producers.*

The Nannup CRC has available for hire a NLIS scanning wand.

Hire fees:

Pick up and return same day - \$11.00

Pick up and return next day - \$16.50  
(within 24 hours)

A bond applies and ID is required.

The CRC can also upload and amend your scanned info to the NLIS database at an additional fee if you do not have access to the Internet, or you would like to leave it to someone else.

**For more info, contact the  
Community Resource Centre  
on 9756 3022**

## MELBOURNE CUP LUNCH



### Nannup Flower & Garden

Are holding a fund raiser at  
**Especially Tulips**

Dean Road Nannup

Tuesday 4th November - 11am

3 course Lunch \$30 - Bar

\*Monster Raffle \* Best Hat \* Best Outfit  
\*Garden Games \*Cup Sweep

Booking Essential RSVP Thurs 30th Oct  
Ph: 9756 1286

## JASON ELECTRICAL

DOMESTIC  COMMERCIAL  INDUSTRIAL

ABN: 52 622 733 810  
INSTALLS AND MAINTENANCE  
m: 0423 282 677

e: jasphilp07@hotmail.com  
EC 9129

## GEO SHEDS & BARNs

**ROSS BEATTY**

E: geosheds@gmail.com

**9756 1670**

**Mob: 0409 548 801**





## F.R.O.G.S Early Learning Centre

(ABN 29 074 370 505)

**Monday – Friday**  
**8.30am – 4.30pm**

32 Grange Road, Nannup  
Tel: 9756 1122

Permanent and casual bookings  
available, 2 hour minimum.

- Early educational programs for 0-12 year olds
- New facilities
- Small group numbers
- Fully qualified, experienced staff
- Family assistance rebates

### Fun at F.R.O.G.S (Free Range on Grange)

The children wanted to act out the nursery rhyme Little Miss Muffet, again. There was a lot to organise. Where will we act out the play? Who will be Miss Muffet? Who will play the spider? Where will the audience sit? Who is the storyteller? Will we sing it, or say it?

It was decided (by the children) that we would sing the nursery rhyme. After trying very hard to take turns being Miss Muffet, I decided why not just let them ALL be the Miss Muffet!

This worked really well – we ended up with seven Miss Muffets, all sitting on their tuffets, two spiders and one storyteller.

I was the director – my job was to make sure all the Muffets were sitting on their tuffets and not arguing about whose tuffet was whose; and the two spiders were to be reminded that they should not be on set until their cue. Unfortunately, the camera person was too busy to be involved this time round.

The storyteller began speaking,

"ummmm, how does it go again?"

"It starts off... Little Miss Muffet", I prompted.

"Oh yeah! Little Miss Muffet sat on her tuffet, eating her curds away... (lol) Along came a spider..."

By this time the spiders were playing with a feather! Eventually they got their act together and tickled all the Miss Muffets and yes, they all ran away.

What a great bunch of kids we have at F.R.O.G.S.

*Nola, Childcare Educator*

**Come and take a look around, book in for your FREE orientation**  
**Contact Renae on 9756 1122**

**GIVE ME SPACE**  
**DON'T SAY HELLO TO A DOG WEARING YELLOW**  
A yellow ribbon on the leash or on the dog could mean...

I'm shy  
I've just been adopted  
I get too excited  
I'm deaf  
I'm recovering from surgery  
I get grumpy  
I'm in training  
I'm old and tired

**PLEASE GIVE US TIME TO MOVE OUT OF YOUR WAY**  
**YELLOWDOG AUSTRALIA**

[www.yellowdog-australia.k9events.com](http://www.yellowdog-australia.k9events.com)  
[www.facebook.com/YellowdogAustralia](https://www.facebook.com/YellowdogAustralia)

*This campaign is not suitable for dogs with a bite history!*

### Melbourne Cup Day



The Nannup Hotel is planning a Melbourne Cup Day Luncheon.

Ring or call in to the Hotel for more information and keep an eye out on the local notice boards for further details.

Builders Registration S1552



**WILDE DESIGN  
AND CONSTRUCTION**

**New Homes Additions Renovations**

Tel. 0406 158 193 or 0409 689 795

Email: [landon@wildedesignandconstruction.com.au](mailto:landon@wildedesignandconstruction.com.au)  
or

[vernon@wildedesignandconstruction.com.au](mailto:vernon@wildedesignandconstruction.com.au)

### AVENUE OF HONOUR FUNDING APPROVED

**We have been advised that government funding for the Nannup ANZAC Centenary Avenue of Honour has been approved. It will be full steam ahead from 1st October.**

**The most important thing is to ensure that we have the correct names and details of those who will be commemorated in the Avenue. Research has produced the following:**

RANK	NAME	UNIT	PLACE OF DEATH	DATE OF DEATH	AGE
Private	Andrew Blythe	11th Battn	France	27FEB1917	23
L/Corporal	Benjamin Blythe	12th Battn	France	10NOV1916	20
Private	William Boyd	16th Battn	At Sea	14SEP1915	22
Private	William Faulkner	11th Battn	France	22JUL1915	25
Private	James Green	28th Battn	France	29JUL1916	20
Private	James McAlpine	16th Battn	France	11APR1917	30
Private	Edwin Moyle	28th Battn	France	3NOV1916	27
Private	Frank Townson	12th Aust MG Coy	France	15NOV1916	28
Private	Bertram Wire	11th Battn	Dardenelles	1AUG1915	29
Private	James Mattinson	11th Battn	Gallipoli	7AUG1915	22
WOFF	Joseph Browne			28MAY1944	
Private	Mervyn Donovan	2/2 Pioneer		26JUL1945	39
Flt/Sgt	Wintfrend Harrison	166 Squadron		3JAN1944	23
Private	James Lawless	W/Comm recruiting staff		6AUG1940	32
Private	Richard Lyon	2/27th Battn		1DEC1942	26
Private	Thomas McAtee	2/16th Battn		2SEP1942	32
Private	Donald McKelvie	2/32nd Battn		1NOV1943	30
Private	Norman McNess	2/28th Battn		17AUG1942	30
Private	Ronald Roberts	2/4th MG Battn		11FEB1942	22
L/Corporal	Marinko Tomas	5 RAR		8JUL1966	21

**As you can see, there are a few gaps in our data.**

**Please contact Trevor Hay on 9756 1772 or [tdhay@westnet.com.au](mailto:tdhay@westnet.com.au) if you can provide any further information or if you believe we have missed someone.**





## THE CHILDREN ARE INVOLVED. ARE YOU?

St John Ambulance W.A has announced an initiative to introduce First Aid knowledge to as many school children as possible. With a first year target of 200 000 students state-wide, starting in kindergarten and flowing through to the end of high school, it is good to know that Nannup District High School is involved in this programme.

The kindy children learned how to make emergency telephone calls whilst the older grades were introduced to the practicalities of first aid assistance.

This is a progressive, ongoing implementation. This means that every year the students will be:

- given an upgrade on previous knowledge
- introduced to, and practise, new applications

"OUT OF THE MOUTHS OF CHILDREN" after their 1<sup>st</sup> aid experience.

"I practised seeing if people were breathing at lunch time. If they are not breathing I must call the ambulance. 000"

"I only had 89 oxygen and I had to get more. Now I have 124 oxygen."

"I want to be an ambulance person or a fire person when I'm bigger."



### HOW CAN YOU HELP?

When you join the St John Ambulance Fund the membership money stays with the 'ambos' in Nannup. These payments are then used to facilitate funding. This funding will go towards maintaining the ongoing first aid programme at N.D.H.S. Perfect circle!

A St John Ambulance membership guarantees that, should it be needed, ambulance transport will be provided at no further cost to the patient. (Without membership the cost of ambulance travel can run into hundreds of dollars.)

FAMILY MEMBERSHIP \$81.00 per year.

SINGLE MEMBERSHIP (18 years plus) \$49.00 per year

For further information about membership contact:

Barbara Croft: [sja.nannup.accounts@westnet.com.au](mailto:sja.nannup.accounts@westnet.com.au)

Mob: 0427093913 Phone: 97563061

## Up Poop Creek Without A Steering Wheel

My name is Colin Fox. That's me on the left, and my Shitbox Rally co-driver, David Willcox on the right . In June this year, we bought a car worth less than \$1000 and drove it from Perth to Darwin (via the infamous Gibb River Road) in the annual fundraiser rally and (as a part of 250 teams) helped raise over \$1.5 million dollars for the Cancer Council, and here is our story....

The founder of the Box Rallies (there is another called the Mystery Box Rally) is James Freeman. James lost both of his parents to cancer within 11 months of each other. He decided to start a fundraiser rally, where participants buy a car worth less than \$1000 and drive it across the outback of Australia. In it's inception year (2010) there we 17 cars. In 2015 there were 250! Next year is being scaled back to a preferred 200 teams as the challenges of finding accommodation in small towns for 500 plus people is huge!

While Dave and I both agreed the idea of driving an inexpensive, possibly unreliable car for a week together with other like minded fundraisers was too

cool, my family has also been struck by cancer, with my Father being diagnosed with prostate cancer in 2012. Early detection meant he has made a very good recovery and is now all clear! (Please Local Blokes, get annual checks once you are over 40, especially if the disease has been in your family previously - it is the most



Colin Fox (left) and David Willcox



Dave in his body paint

curable cancer, with 90% survival rates). Dave and I formed team FoxCox and raised \$11,203 this year and we hope to DOUBLE that for next year's rally. Beginning on May 9, we are travelling from Canberra to Townsville, via Birdsville! (James likes challenging routes that push these cars to the limit, and also the support mechanics!) I would like to ask the local community for their help in us reaching our goal. People can donate much needed money (100% tax deductible) or prizes for future raffles I will hold at the Markets and such. Businesses have the option to sponsor us, which would include their logo on our Shitbox (it's an XF Ford Falcon Ute for 2015...yep, I bought it already) or they can also donate money or prizes such as vouchers, accommodation, activities. We will

also make the car available once it is painted and covered with sponsor logos for photo shoots with the businesses to put up on their notice boards. I hope this to be as beneficial to the local community as well as our Cancer Council research funds. People can donate here;

<https://shitboxrally2015.everydayhero.com/au/foxcox>



While the focus of the rally is to raise funds for Cancer Research, including new drugs and treatments, there is a fun focus while on the rally, including dress up theme nights, fun activities and generally enjoying the drive and one-another's company. This year, the essential dress up day was "Where's Wally" themed. I have attached a photo of this day.....while I purchased a uniform, Dave went one step further as used body paint! There is a game for the duration of the rally. The rules are simple...say the word "mine" and you have to do 10 push-ups! I think I did 230 push up's this year!



*Shitbox Rally participants having fun in the sun*

We hope you will be interested in helping us reach our goal, and bring survival rates even higher. You can also follow the journey (including car pics as we paint/prepare) on facebook. Just add me as a friend and I will post regular updates, and every day (where we have phone network) whilst on the rally. There is also a rally facebook page called "Shitbox Rally". Please have a look and at their website. [www.shitboxrally.com.au](http://www.shitboxrally.com.au)

For businesses that may be interested in sponsoring our team, please contact me directly.  
Colin Fox 0400 294 737



## Seniors Christmas Lunch/Op Shop News


The Nannup Seniors Christmas Lunch will be held on Monday the 24<sup>th</sup> of November for the 'over 75's in our Community. Since its inception in 2010, the lunch has been organised and funded by the OP Shop Volunteers with help from CWA and Lions Club members. CWA are keen to take over the organisation of the lunch, which, in the long term will be beneficial as with their membership and resources it should ensure that the lunch continues for many years to come, long after those involved at present have stepped aside. Of the OP Shop volunteers, six are already lunch guests and three more will be eligible within the next couple of years, leaving only three or four volunteers to do the organising. The OP Shop will be assisting CWA and will also contribute funds towards the lunch from the proceeds of the Gift table operating from within the OP Shop. This event is sponsored by the Nannup Shire.

**If you are new in the District, have reached this milestone or have not yet received an invitation to the November 24th event, please contact Gloria on 9756 0118**

The OP Shop continues to operate from No 2 Brockman St with all OP Shop proceeds going to Nannup District High School P&C Association and is used for the benefit of all Students.

Please support the OP Shop as it supports your children!

Opening hours are Monday, Wednesday, Thursday, Friday and Saturday morning, longer on Thursday and Friday if volunteers are available.



**Nannup - Town Centre**

**Saturday**

**18th October**

**[www.swfoodbowlfestival.com](http://www.swfoodbowlfestival.com)**

### To the Nannup Community

Thank you to the people of North Ward for having confidence in me to act as a Councillor. It was heartening that such a large number of people in the Ward were able to exercise their right to vote in the recent by-election (about 30%). This is a good turnout for a by-election in the Shire.

To Dave Boulter, thank you for being willing to commit the time and energy needed to be Councillor and for putting yourself forward as a candidate for the by-election.

I will work hard to ensure that people's confidence in me is warranted.

If you have any matters you wish to discuss with me please do not hesitate to contact me:  
Home: 9756 0250, or email:  
[catherinestevenson25@bigpond.com](mailto:catherinestevenson25@bigpond.com)

I look forward to working with you, for the good of Nannup.

Yours faithfully,

Cate Stevenson  
(Paid for by Cate Stevenson).

### SOUTH WEST FOOD BOWL COOKING COMPETITION

This is a reminder now that you have seen the recipe schedule you may like to send in an item for judging. Entry forms are available the Nannup CRC or from a CWA member.

We have had a comment about the pumpkin scones. They were chosen because we hope they will have some SW eggs and pumpkin in them. Just as the muffin made with SW olive oil and fruit, vegetable, cheese etc.

The sponge is unfilled for health reasons but also because the judge is going to judge your sponge cake. Will it be the prize winner?  
You won't know if you don't enter!

Take up the challenge and have a go. We need a good display of the best of Nannup's preserves and baking.

**CHILDREN** - it's fun to enter and see your creation or cooking on display especially if you have won.

Two pumpkin scone recipes for you to try. I have chosen them out of the new 90th Anniversary Scone Cookbook. The books will be on sale at the Bowling Green room over the days of the South West Food Bowl.

#### PUMPKIN SCONES (1)

1 cup mashed pumpkin, 2 tblspns sugar  
2 tblspns butter, 1 egg, 2 tblspns milk, 2 cups SR flour

Sift flour, add sugar, rub in butter, add beaten egg milk and pumpkin.  
Cut out scones on floured board, Bake in hot oven until cooked.

#### PUMPKIN SCONES (2)

1/2 cup sugar, 1/2 cup butter, 2 3/3 cups SR flour,  
1 egg, 1cup cold mashed pumpkin, 1 tspn vanilla  
pinch of salt

Cream together butter and sugar until light and fluffy.  
Add the egg and beat well. Fold in pumpkin, add flour and form a soft dough. Knead a little and cut with scone cutter. Place on a buttered tray or baking paper and bake in a hot oven for 10 - 15 minutes.

**PAT TWISS**



Friday 17th October - **SCHOOL'S EDUCATION DAY**. Over 500 student's will be in attendance learning about our wonderful Ag industry!

Friday **SUNDOWNER** 6pm - 9pm - come along and enjoy local wines, cider and taste platters! **SABRINA HAHN** will also be in attendance to chat all things gardening and growing - a great way to kick off the celebrations! Pre-order your tasting platters at [www.trybooking.com/102395](http://www.trybooking.com/102395)

## Saturday 18th October

### Open to the public - Free entry

Includes:

**FARMERS' BIG BREAKFAST** - including presentation by Jackie Jarvis, WA's RIRDC 2014 Rural Woman of the Year. Gold coin donation (8:30am Town Centre)

**FARM TOURS** - an amazing opportunity to visit a working beef farm, orchard, egg farm and cheese producer - learn about where your food comes from **DIRECT** from the farmer! Free buses departing from the Town Centre at 10:30am and 1:45pm.

Presentations by **SABRINA HAHN** and friends in the 'Growing Inspirations' Tent - discover the secrets to sustainable gardening and growing



Local Farmers' Markets  
Shearing Demos

Scitech  
Kid's cooking comp

Ag Expo  
Art Exhibition

**INTERACTIVE COOKING WORKSHOPS** - Learn to make your own bread, cheese and pizza! To book in for your cooking workshops visit [www.trybooking.com/102395](http://www.trybooking.com/102395). Tickets \$10 per session

**LEON'S LUSCIOUS LUNCH** at the Bridge Cafe - Sample Chef Leon's local lunch delights whilst Louise Fitzroy informs you about the food journey from paddock to plate. Tickets are \$50 and available from [www.trybooking.com/102395](http://www.trybooking.com/102395)

**'SOUTH WEST SENSATIONS' Dinner** with Louise Fitzroy 'From Paddock to Plate' - Enjoy a decadent feast created by celebrated chef Matt Hamilton (Rivendell Estate restaurant - Yallingup) showcasing our wonderful South West produce while Louise Fitzroy guides you through the menu, chatting to the farmers who produced the food and experiencing the Paddock to Plate journey. Tickets are \$100 and available from [www.trybooking.com/102395](http://www.trybooking.com/102395)



Venue: Nannup Hotel

Proudly sponsored by:





## 1<sup>st</sup> Birthday for Nannup Community Kitchen

It is hard to believe but it was a year ago on 1<sup>st</sup> October 2013 that the Nannup Community Kitchen hosted its first evening meal. The Kitchen continues, going strong, providing nutritious meals and a social setting for locals and visitors alike to meet on Tuesdays for an evening meal.

Ms Brownie Dickens is the driving force behind the kitchen but relies heavily on the support of local community members and businesses for it to be a success. Ms Dickens said that *"Without the commitment and energy of so many locals the Kitchen would not have been able to get up and running and continue for 12 months."*

The Community Kitchen wishes to thank the following volunteers for their support over the previous 12 months:

Roscoe Bartrop, Robert Lawson, Marie Zimmerman, Ailsa Pritchett, Suzie Johnson, Bev Adorian, Maggie Longmore Paul Jeffrey, Sharon Barker, Delma McKenzie, Jo Douglas, Jenny Laughton, Tanya Coffee, Jenny Chen and Cate Stevenson.

Special thanks to the children who have helped out in the kitchen – Mitch Graham (of Mindarie) and Georgia, Olivia, Sienna and Kendra Thompson. Thanks are also due to the people who have provided delicious desserts: Linda Thompson with her girls Georgia, Olivia, Sienna and Kendra; Narelle Roper and Tanya Challis.



*Rosco Bartrop, Robert Lawson, and Jo Douglas help Mitch Graham visitor from Mindarie with his evening meal*



*Nannup locals enjoy the Community Kitchen meals*

Without the donations & support of the following businesses, community organisations and individuals the Kitchen could not operate, Thank you:

Nannup Bowling Club, Nannup Lucky 7 (Wendy's), Bakers Delight Busselton, Simone van Buerle of Well Being Warren Blackwood (WBWB), Trish's Kitchen, Shire of Nannup, Living Foundation, Nannup Lions Club, Nannup Community Resource Centre, Out and About Eggs, Chris Masterman & Elizabeth Horne (Bretby Olive Oil), Mick & Marion O'Callaghan (Nannup Tiger Olive Oil), Bob and Maggie Longmore, Louise & Brett Furniss, Toni Otte and Melanie & Jeff Moore.

*"So many individuals and businesses have helped out over the year I apologise if I have forgotten anyone. Their support is greatly appreciated. Most importantly we would like to thank all those individuals who have joined us for a meal and look forward to welcoming first timers and returning people over the next 12 months", said Ms Dickens.*

Thank you again to the community of Nannup for their support.

The Nannup Community Kitchen runs out of the Nannup Bowling Club and is open from 5.00pm to 6.30pm (open until 7.00pm from 1 November) every Tuesday, except Christmas Eve and New Year's Eve. Everyone is welcome to come and sit down for a meal, with a vegetarian option available. People are asked to make a \$5 donation for the meal, with the adage, *"More if you can, less if you can't"*. Children eat for free.

So next time you are in Nannup on a Tuesday evening pop in for a meal at the Nannup Community Kitchen.

By Cate Stevenson



## THE REAL ESTATE MIX

The Real Estate Mix... is probably at bit like the *marketing mix* - it takes many different types of approaches and areas to get it right. For a **healthy real estate market** to exist many other aspects besides just your normal residential buying and selling come in to play.

**Investors are major part of the real estate mix...** there are all kinds of investors out there in the market. Some invest in *commercial properties* and others in *residential properties* and then there are the *developers* but they all follow **certain patterns**. For instance a few years ago I listed a couple of houses in Nullagine... yes, that's right Nullagine which is approximately halfway between Newman and Port Hedland - a very small isolated community amongst stunning mountainous scenery and large river.

One was already rented but the other was fully furnished ready for contractors coming in and could fetch **rents of \$2000 a week** or more over 6 weeks up to 12 month contracted periods. Because of sales evidence the property was **listed for \$220k** and our office and the owner were overwhelmed by the calls we received from all over Australia from investors who wanted to make immediate offers on the property. There are always people out there looking for a good rental investment. So what is a good residential rental investment?

Normally a rental will return using the following **formula - market price \$300k = rental \$300 per week** but it doesn't always work that way and investors search hard and long for a good buy with a higher rental return.

**Investors fled Nannup** when residential town houses reached **over the \$300k mark** while rents at the time were still around the **\$150 to \$230 per week**. Using the formula above you certainly wouldn't be considering buying a rental investment on those figures whereas at the same time you could buy a home in several places in *Queensland* for **\$150k to \$200k and rent it out for \$250 to \$300 per week**.

This kind of investor is a major part of the real estate mix and finally after **town site property prices falling during the GFC** a couple of local investors have bought cheaper properties specifically as rental investments and this is because whilst price of properties in Nannup have come down, **rents have actually gone up due to the scarcity** of available rentals. This combination has made it once again worthwhile for investors to buy a property and lease as a long term rental.

**So part of the real estate mix...** is the Investor market and if you lose that section of the market due to over inflation then you really end up



Office: 08 9756 1177

Chris Roycroft: 0428 320 837

Kim Roycroft: 0429 703 531

Open 9 am—5 pm Mon—Fri; 9 am—3 pm Sat

Sundays by appointment

with unbalanced market.

**Developers are also a major part of the real estate mix...** and just as the investors got out during the GFC the developers had no choice but to either **get out or wait it out**. In some rural towns developers just went to the wall having invested heavily in large subdivisions only to find that when they put them on the market they were facing the GFC and there were no sales to be had. Luckily, others have managed to scrape through.

**Developers need to buy the right property at the right price and at the right time...** timing is important for development as we have just witnessed what happens you get the **property cycle** wrong. The most efficient time to purchase land for development is **between the bottom** and the **first two years** in to a **rising cycle**. This way the developer can buy at the right price and stage the subdivision so that the planning and development of the site can take the lower end of the rising cycle and hopefully **sales then come in at higher prices** as the cycle rises.

Over the next few articles we will cover other areas of the real estate mix.

**If there are questions you would like to have answered why not email them to [chris@nannuprealestate.com.au](mailto:chris@nannuprealestate.com.au)** and I will be happy to address them in a future article.

*Chris Roycroft*

You can keep track of what is happening online at [nannuprealestate.com.au](http://nannuprealestate.com.au) or have a look at our facebook page at [facebook.com/nannuprealestate](https://www.facebook.com/nannuprealestate) to see all the latest news.

## *Serving our Clients and our Community*

### Rental available...



### 4 x 2 FAMILY HOME \$325 per week

Available immediately for rent this Summit-built 4 x 2 with 5-star energy rating was built in 2013, making it one of Nannup's newer homes.

The master suite has an en-suite and walk in robes, while the remaining three bedrooms have built in robes. There is a generous open plan living area with a well-appointed kitchen and a small fully fenced back yard overlooking Higgins Swamp.

Ring Kim on 0429 703 531 for an inspection.

## Western Australian Country Health Services – South West Nannup Health Service MPS

### Child Health Clinics

Every 1<sup>st</sup> Monday of the month from 1.00 to 3.00pm, every 3rd Monday of the month from 12.30 to 2.00pm. Please phone 97563800 for an appointment

### Immunisation Clinics

Held every 3rd Monday of the month from 1-3pm.

### Foot care Clinics

Do you need your nails clipped? Appointments available

### Pathology Manjimup Path Centre

Tuesday and Thursday from 9.00am to 11.00am.

No appointment necessary. Please advise reception staff if you are fasting.

### Private General Practitioners

Monday, Tuesday and Friday. Please phone the Hospital for an appointment on 97563800 between 8.30-4.30. As Doctors appointments are in high demand, we would appreciate notification if you are unable to attend your appointment.

### Other Clinics:

- Asthma Nurse – as needed
- Continence and Stoma Therapy – as needed. Phone 97821222 for appointments.
- Dietician – As needed. Phone 9777 0470 for appointment
- Diabetic Educator – as needed. Phone 97563800 for appointments
- Occupational Therapist – as needed. Phone 9777 0470 for appointment
- School Nurse – visits school every Thursday.
- Speech Pathology – As needed. Phone 9777 0470 for appointment
- Social Worker – as needed.
- Rural Link-after hours mental health services  
Phone 1800 552 002

### Nannup Community Care

We can assist if you are an elderly person, a person with a disability, or caring for a relative or friend who is elderly, or has a disability.

Assessment is necessary prior to services being provided and this can be arranged by contacting Cecelia Aldridge on 9756 1061 Monday, Tuesday, Thursday and Friday between 9.00am to 2.00pm.

### Useful Telephone Contacts

Health Direct and GP 24	1800 022 222
Rural Link	1800 552 002
Lifeline	13 11 14
Mens' line	1300 789 978
Crisis Care	1800 199 008

### **Remember in a life threatening emergency, ring 000.**

For further general information and information regarding any of the clinics, please do not hesitate to contact us on 9756 3800 during office hours.

## Church Service Times in Nannup

**Anglican Church** - Sundays at 5pm

Contact: Catherine Scott 9756 1114

**Catholic Church** – 1st & 3rd weekend of month

Saturday 5pm

Contact: Kath Dean 9756 0680

**Uniting Church** - 3rd Sunday of month at 1.30pm

Contact: Revd. Brenton Prigge

Busselton Church Office 97523304

Sorry to make you wait! The  
next  is Sunday  
16th November at 3.30pm



## Program Guide October 2014

Contact the CRC for timeslots or visit the website for a full program guide at  
[www.drd.wa.gov.au/programsandprojects/services/westlink](http://www.drd.wa.gov.au/programsandprojects/services/westlink)

TedX Live 4 Oct 9.30am - 4pm

Stress, Anxiety & keeping your cool 4, 5 Oct - 7pm

Bullying—11, 12 Oct -7pm

Alcohol & Pregnancy—25, 26 Oct -7 pm

Hearing difficulties impact on work :-

Oct 17, 19—12pm

Oct 18—7pm,

Oct 21—10am



Government of Western Australia  
Department of Regional Development



**OPEN MONDAY TO SATURDAY**

PERSONAL TRAINING

GROUP CLASSES AND PRIVATE GROUP TRAINING

CASUAL GYM USE

LOT 4 KEARNEY ST, NANNUP

0408921052

[zanshin.pt@gmail.com](mailto:zanshin.pt@gmail.com)



VIA  
VIDEO CONFERENCE!

**The Foodbank WA Food Sensations® program provides nutrition education for adult groups through practical and interactive workshops.**

**Learn about:**

- Healthy Eating Pyramid
- Serving sizes
- Sugar in drinks
- Diabetes
- Homemade vs. takeaway foods
- Food labels—how to read and understand them
- Mindful eating (weight loss)

**PLUS! Learn how to cook delicious healthy recipes!**

**WHEN:**

(Thursdays) 11:00am - 1:00pm

- 16<sup>th</sup> October
- 23<sup>rd</sup> October
- 30<sup>th</sup> October
- 6<sup>th</sup> November

**WHERE:**

Nannup CRC 10 Warren Rd.  
PLEASE RSVP on 9756 3022



## Nannup Lions Club

The 'Cancer Screening for Melanoma' van will be in Nannup on Saturday, November 29th at the Village Green. If you would like an appointment on this day, please ring me, Isabell Green on 9756 1045. If I'm not home, please leave a message and I will return the call.

Thank you,

Isabell Green (Coordinator Lions cancer screening)

A big thank you from the Nannup Lions Club for donating all the spectacles and hearing aids to Clare at the Nannup Pharmacy for distribution to other countries.

We would like you to keep donating these as Nannup has done very well with this project.

**A Service of Remembrance will be held on  
November 18<sup>th</sup> 2014**

**All our welcome to join this service of reflection in memory of your loved ones. Bring your favourite flower to float in the Blackwood River**

**and then stay to chat and enjoy a light tea.**

**Time 5.30pm.**

**Place Foreshore Park**

## OSTEOPATHY

Rowland Benjamin D.O.

is a registered Osteopath and is in practice in Bridgetown. Rowland treats muscle and joint problems such as chronic or intermittent pain with hands-on manipulation. It takes about three visits to fix one problem. The case history, examination and treatment take about 30 minutes.

For enquiries or an appointment phone 9761 4558  
[www.rowlandbenjamin.com](http://www.rowlandbenjamin.com)



Renae & the girls from

**NEW BEAUTY** (Manjimup)



are **NOW visiting Nannup** at Nannup Pharmacy.

Please phone **9771 1772** to make your booking.  
(Price lists avail. at Nannup Pharmacy)

**\*Waxing \*Tinting \*Pedicures \*Manicures**

**\*Facials \*Massage \*Ear & Nose Piercing**

Cash only, no cards

If your GP is closed, we're open.

After hours GP helpline.

Health direct **1800 022 222**

Have an urgent health concern after hours?

The *after hours GP helpline* can give you reassurance and practical medical advice

**Operating times:**

6pm to 8am Monday to Friday

6pm to 8am Saturday

12 noon Saturday to 8am Monday

24 hours on public holidays

Calls from landlines are free. Mobile charges may apply



**XTEND**  
COUNSELLING AND PSYCHOLOGICAL SERVICES  
*Providing a Bridge to Wellbeing*

**Geoff Trainer**  
Psychologist

20 Brockman St  
Nannup

9724 1011

0429 312 141

### The Polished Men



James Byrne (left) and Duncan Swadkins (right).

Local policemen, Officer Duncan Swadkins and Officer James Byrne have been seen recently with an extra splash of colour. A beautiful shade of blue no less!

They were asked by local resident Neil Roper to show support for the "Polished Man" fundraising campaign.

This campaign, an initiative of YGAP, an organisation inspiring social change, was challenging men to end violence against children, in which each supporter was asked to paint one fingernail. The one nail representing the 1 in 5 children who will experience some form of violence globally.

Our boys in glittery blue were in great company with the campaign receiving support from AFL football players, actors and other well known Australians.

### THE MUSIC IS CALLING...

COME AND JOIN US WITH YOUR INSTRUMENTS AT MOWEN SPRINGS  
(OFF OF MOWEN ROAD) ON **WEDNESDAY THE 8TH OCTOBER** FOR  
ANOTHER GLORIOUS EVENING OF MUSIC TO CELEBRATE THE  
TOTAL ECLIPSE OF BLOOD MOON. WE COMMENCE AT 5.00PM SHARING  
PLATES OF DELICIOUS OFFERINGS (PLEASE BRING ONE IF YOU ARE ABLE).  
PLAYING STARTS AT AROUND 6.30PM. ALL ARE WELCOME

FOR MORE DETAILS PHONE KARLO ON: 042 4409 414

#### LOUISE'S KITCHEN

Fish and Chips  
Rotisserie Chickens  
\$10 specials each day  
**EFTPOS** Now available  
**SPECIAL SUNDAY** from 5pm  
ALL FISH & CHIPS \$10.00  
Phone orders 9756 1147

#### Nannup Garage

(Behind Caltex Service Station)

59 Warren Road, Nannup

\*All Mechanical Work \*Tyres & Tyre Repairs

\*Batteries \*RAC Service

Call Paul Martin on

9756 1865 or 0447 869 753

ampolgarage@bigpond.com

Repairer no. MR8510

BN 11734902



Department of  
Agriculture and Food



## Small landholder news

Small Landholder Information Service

[agric.wa.gov.au/slis](http://agric.wa.gov.au/slis)

[facebook.com/DAFWAsmalllandholders](https://facebook.com/DAFWAsmalllandholders)

**With Jodie Whitfield, Manager**



Spring has sprung and activities should be well underway for getting your property ready for summer.

As we head into bushfire season there are a number of actions you should take to protect your family and property from the threat of fire. You can protect your house by installing wire or metal flyscreens, placing seals around doors and windows, cleaning out your gutters and using fire resistant insulation in the ceiling.

It is also recommended that you have a store of personal protective equipment including long trousers made from natural fibres, cotton or woollen long sleeve shirt, hat, gloves and safety glasses. Many fires start from burning-off operations which get out of hand. Make sure you know what you are doing – check first with your local government.

A vegetable patch and orchard, while not only supplying you with wonderful fresh produce, can also make a green firebreak. Locate it on the side of your house most at risk from a bushfire and make it part of your bushfire protection plan.

With sheep, scouring is showing up and regular worm egg counts should be maintained to assist you in identifying when you need to drench your flock.

If you own alpacas and have not shorn them this year, now would be a good time. If you do not shear them, you run the risk of wool becoming contaminated with weed seeds and the animal suffering heat stress over summer. While your alpacas are restrained, check if their nails need dipping.

Pastures are starting to dry-off so you may need to think about buying feed. When considering purchasing hay keep in mind that it is often a common way for weeds to spread. When purchasing hay request from the supplier that it is Annual Rye Grass Toxicity (ARGT) free. A test is available. Check your stored hay regularly as heat can build-up between bales and start fires.

Regular control of rabbits is also recommended. Rabbit control options can be found on the Department of Agriculture and Food Western Australia website ([agric.wa.gov.au](http://agric.wa.gov.au)).

The Farm Diversity website recently launched by the Rural Industries Research and Development Corporation (RIRDC) is a free and easy to use resource which offers options for diversifying enterprises.

You can enter your postcode and a 'shortlist' of industries that may be viable in your area will be displayed. For each plant and animal essential information such as production status, growing region maps, risks and challenges, regulatory considerations, publications, resources and contact information for industry bodies are provided.

See [www.farmdiversity.com.au](http://www.farmdiversity.com.au) for more information.

If you have any queries please contact us on our Facebook page at [facebook.com/DAFWAsmalllandholders](https://facebook.com/DAFWAsmalllandholders) or send us an email at [small\\_landholder@agric.wa.gov.au](mailto:small_landholder@agric.wa.gov.au). We would love to hear from you!

Until next time, **Jodie**.

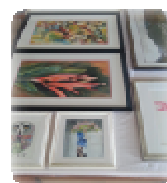
## SNAKE ISSUES?

CALL

MARK DENING  
(Qualified Snake Handler)  
Parks & Wildlife LIC:1811

0417 581 743

*Awareness\* Handling\* Relocation*



mobile  
picture  
framer

**Busselton / Nannup**

Contact Lucy for an appointment:

ph: 0427 978 884 e: [lushframes@westnet.com.au](mailto:lushframes@westnet.com.au)

fb: [LushFramesPictureFraming](https://www.facebook.com/LushFramesPictureFraming)



## Firstly, it's Spring

The great sky wheel has turned, pulling us inexorably into longer days, dry air, and in the bush, an awakening. There have been a number of firsts this month. The first reptile, a somewhat bemused bobtail, so absolutely still and camouflaged it was very nearly stepped on.

The first warblers, the operatic maestro's of the bush – their whistles and calls are an exquisite auditory experience. So enchanted am I by their song, I once went as far as to pull out the 'bird book' in an attempt to identify them. Said book is currently un-locatable (I just looked) but from memory these chunky brown, visually nondescript birds *are* of the warbler family. They are not easy to spot as they seem to prefer the top of the canopy and don't move around much. For some reason, in my mind, I equate them with rainforests – too many Disney movies perhaps – but they never fail to fill my heart with joy.



**Ant hill**

Then there are the first spider orchids, or at least my first discovery of them. They are made special by their rarity, because truly, how does one judge one flower more beautiful than another? Yet they are definite step stoppers. I can wander past soft yellow balls of acacia, vivid purple climbers and delicate pink bells with ardent appreciation yet a sighting of an orchid inevitably has me stopping, stooping and sighing in awe at the delicate wonder of it.

A first also this month was an unusual awareness of what goes underfoot. In deference to those who truly call the bush home I tend stay 'on track', only occasionally heading across country on a minor kangaroo path or beating out my own. The tracks themselves are source of interest, if one is so inclined. In some parts rocky, others



**Termite mound**

sandy and at this time of year, under jarrah or marri, somewhat akin to a bed of marbles. Eucalypt 'nuts' after being divested of their seed by hungry cockatoo's and dropped to the ground can be a reflexology therapy or death trap depending on how steady you are on your feet. It doesn't help when the local kookaburra's let loose an accompaniment to your ungainly sprawl. Still, I'm wise to it now and slow down, enjoy the impromptu massage to the soles of my feet and have the last laugh at my feathered friends.

Still underfoot I must once again sing the praises of the humble sheoak. I don't know if their leaf drop is due to birds or a seasonal shedding, but the thick carpet of fine needle like leaves under these trees is an absolute delight for the feet. The sheoak groves are a comforting, enclosing space without entertaining even a hint of claustrophobia. If I were ever to make a bed in the bush, it would be under one of these trees.

I'm not the only one to find succor in the fallen leaves of these bountiful trees. Ants apparently prefer them as their number one building material. With a focus from my head height their constructions are large and impressive for individuals so small. I compare them to the pyramids and their human builders, surely they are a feat no less remarkable. From a feet focus (and the photo was not L hence its non inclusion) they are less pyramid (that is more the termite mound) and more Colosseum. The space is far more open than one might expect and perhaps even less Colosseum than series of super highways, with ants busily scurrying in every direction. Observing ant hills is best done prone, at length, with a willingness to temporarily become a highway extension, that is a first for another month.



**Australian Indigo**

The final first ... a bearded biped on bicycle whose song may have lacked the rich tonal variance of the warbler, but who none-the-less brought a smile to my lips and joy to my heart. Thank you sir for your colourful contribution to my morning walk.

**BIRD WATCH****BIRD OF THE MONTH**

Magpie-lark  
(*Grallina cyanoleuca*)

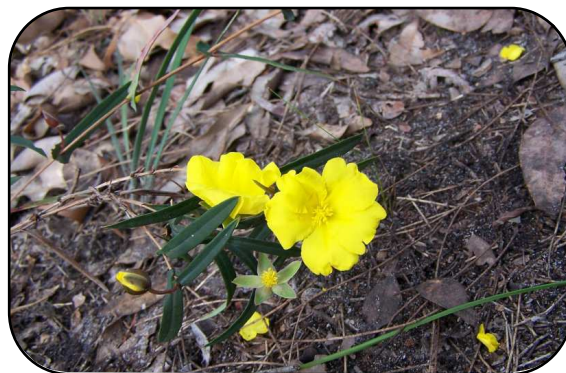
The Magpie-lark is a boldly pied glossy black and white bird around 26 to 30 cm long when fully grown and very common throughout the South West region. The sexes have different head patterning with the male having a horizontal black line through the eye, black face and throat and a white 'eyebrow'. The female has a black line vertically down through the eye, with a white forehead and throat as shown in the above photograph. Both sexes have a white tail with a wide black band, broad white uneven band on the wing, thin whitish bill, pale iris, black legs and quite large feet. The Magpie-lark is also known as a 'Mudlark' because of the mud nest it makes, and also as a 'Peewee' after the sound of its distinctive calls. It is neither a Magpie nor a Lark and is now placed in the 'monarch flycatcher' family. The male and female birds are quite often seen sitting side by side and singing in a closely synchronized duet with each raising and lowering their wings as they do so. The Magpie-lark is aggressively territorial and will fearlessly defend its territory against larger species such as Magpies, Ravens and Kookaburras.

Their habitat is diverse being almost anywhere which has the water and trees needed for the mud nest building, plus open grassed areas as they are terrestrial foragers. A primarily carnivorous species they forage on the ground for a variety of small creatures such as insects and their larvae, as well as earthworms and freshwater invertebrates.

Their nest is a round bowl shaped structure about 150 mm in diameter with vertical sides and usually placed on a large horizontal branch in a tree near water, often up to 20 metres above the ground. The nest is made of dry grass material thickly plastered together with copious amounts of mud and generously lined with grass, feathers and fur. Both the male and female gather the wet mud for their nest building. The clutch size is usually three to five eggs and both parents incubate the eggs and feed the young.

The above photograph which was taken late May this year is of a female Magpie-lark foraging on the grass.

Compiled by Neville Tanner.

**OUR WILD FLORA****WILDFLOWER OF THE MONTH**

Scientific Name : *Hibbertia cunninghamii*

*Hibbertia cunninghamii* was named after two men , George Hibbert (1757 - 1837) a nurseryman of Clapham , London , whose herbarium was presented to the Linnean Society and Allan Cunningham (1791 - 1839) who was an early botanical collector mainly in N.S.W.

The *Hibbertia* family ranges from Madagascar eastwards to the Fiji Islands , but the far greater number are native to Australia and in particular the south west corner . They are found in the tropical north and inland to the MacDonald Range , but nowhere are they such a feature of the landscape as they are in south western Australia from June to November where some 64 species brighten the countryside with their bright yellow flowers . Because *Hibbertia* family flowers are similar , people often do not realize how many different species there are .

The growing habit of *Hibbertia cunninghamii* is sprawling or straggling over the ground from 0.2 to 0.7 metres high with long dark green stem clasping leaves . Flowering period is August to December being large bright yellow five petal flowers . This slender native shrub is common between Perth and Albany occurring in many habitats such as sandy soils , loam , laterite , swampy areas , floodplains or granite outcrops in coastal woodlands or Jarrah forest .

The above photographs of *Hibbertia cunninghamii* were taken mid September this year on the Wildflower Walk in Kondil Park Nannup .

Compiled by Valerie Tanner.

**BARRABUP BREAKFAST RETREAT**

1st Wednesday of every month

We meet at Barrabup Pool at 9am, get ourselves a coffee and go off for half an hour of peace and quiet. We then come back and have breakfast together. No need to bring anything, it is provided.

**Enquiries Louise 97561576**





## From cradle to grave

Pests that damage plants or plant material are not confined to caterpillars munching leaves or bugs piercing the living tissue.

There are parasites which attack the roots as a plant is growing, depriving it of life, and there are insects which work the "graveyard shift", destroying the produce from plants that have been harvested.

This month's column covers two biosecurity risks which are not present in Western Australia and, hopefully, will never gain a foothold here. Report any sightings to the Pest and Disease Information Service (PaDIS) on Freecall 1800 084 881 or email [info@agric.wa.gov.au](mailto:info@agric.wa.gov.au)

## Vampire of the weed world

The roots of branched broomrape (*Orobanche ramosa*) latch on to the roots of vegetables, pulses and oilseed and pasture crops. Possessing no chlorophyll it cannot make its own food so it draws water and nutrients from its hosts, sucking them dry.

Branched broomrape is in South Australia (SA), where contaminated properties have been quarantined for years. If it became established in WA our crops could not be sold via export markets, which would be a huge loss for the economy.

## How to spot the enemy

Branched broomrape has no green parts due to the absence of chlorophyll. It has one or more fleshy, pale brown stems which develop branches just above ground.

The tubular flowers, which set thousands of seeds in about a fortnight, are 15 mm long and pale blue, mauve or cream. After flowering the whole plant turns brown.

Please note that another species, lesser broomrape (*O. minor*), is common in the south-west. It has similar flowers but the plant is unbranched. Found in many Perth gardens, often parasitising nasturtiums and petunias, this weed does not need reporting.

## Prevent it from arriving

It is unclear how branched broomrape reached SA, but movement of agricultural machinery from there into WA could carry seeds.

Anyone importing agricultural machinery from SA must clean it inside and out. Also clean your footwear if you have been on quarantined land. Private travellers from WA to SA should avoid visiting infested properties.

Branched broomrape's host range includes hemp. Seeds could enter WA attached to illegal marijuana or equipment, especially with soil attached, which has been used in its illegal cultivation in the bush.

## Robber in the vault

Cereal plants face the onslaught of pests in the field, but long after the crop is reaped there remain threats to the health of WA's golden harvest.

Khapra beetle (*Trogoderma granarium*) is one of the world's most serious pests of stored grain, causing public health issues and grain losses of 30 to 70 per cent.



Department of  
Agriculture and Food

It is established in various Asian, Middle Eastern, African and European countries. Typically a pest of hot dry climates or commodities stored in hot dry conditions, khapra beetle would thrive in WA.

Our state's grains industry is extremely valuable, with 80 per cent of annual harvest exported to over 50 countries. Many of these international markets would be lost if khapra beetle became established in WA.

### What to look for

With its oval, densely hairy, reddish brown body 2 to 3 mm long, khapra beetle is similar to warehouse, carpet and hide beetles. Anyone finding such insects should forward them to PaDIS so that an entomologist can confirm their identity.



*Khapra Beetle (Trogoderma granarium)*



© DAFWA Entomology, Pia Scanlon

*Trogoderma larvae*

Diagnostic features easier to see with the naked eye are masses of hairy larvae and cast skins. Newly hatched larvae are whitish with pale yellow hairs forming a "tail". Mature larvae are cream with dense brown hair.

Personnel in grain storage facilities may be the first who notice khapra beetle but members of the public also have a role to play. Several years ago a newly migrated family found khapra beetle on their imported belongings.

Also the beetle can be found in almonds, pecans, walnuts, peanuts, barley, wheat, oats, rice, beans, corn or maize, chickpeas, cowpeas and lucerne, as well as foodstuffs such as dried fruit and powdered milk together with product packaging.

### Gilly's Dog Grooming & Wash From Vagabond to show piece



Phone 0403 044 747

### 20 ft Sea Containers

For sales, quotes & hire call 0437 495 554

### Bridgetown Towing

Anywhere Anytime

Insurance · Accident · Breakdown  
Machinery · Transport



# nannup volunteers

10 WARREN RD NANNUP WA 6275 \* 0897563022 \* nannupvrc@westnet.com.au

## October 2014

### WORKSHOPS

*Time Management ° Grant Writing ° Volunteer Management  
Accounting for Not For Profits ° Governance*

We have the opportunity to conduct a workshop for the volunteers and not-for-profit groups of Nannup and we would like to hear from you on the subject that would benefit you or your group.

Please email [nannupvrc@westnet.com.au](mailto:nannupvrc@westnet.com.au)

---

**We will soon be emailing/posting our annual Customer Perception Survey to those people who have used the “Nannup Volunteers” service.**

**This is relevant to the funding we receive and we value your input.**

**Completed surveys can be returned to the CRC and names will go into the hat for a chance to win a bottle of wine.**

***Thank you for your continued support.***

---

### Free On-line Training

An exciting new training opportunity!

High-speed broadband, information and communications technology is here to stay but many organisations are struggling to benefit from opportunities the digital world offers. To help you get digital ready ACCAN is partnering with the Australian Government to provide an exciting new training opportunity for the Arts, Recreation and Education Services sector.

Having an online presence and using the internet to improve internal processes can bring many benefits, but too often organisations have not been able to make the most of fast broadband and information technology. With the rollout of the National Broadband Network, it is more important than ever for small-to-medium enterprises and **not-for-profit organisations in the Arts, Recreation and Education Services sectors** to obtain the skills to reap these benefits. To assist with this, comprehensive online learning tools have been developed through.

These online training courses are now available.

[Getting Connected to Fast Broadband](#)

[Your Online Strategy and Tools to Achieve it](#)

[Using The Cloud](#)

[Online Registration and eCommerce](#)

[Telework](#)

Check out <http://digitalready.org.au> to get started or for further information.



Government of **Western Australia**  
Department of **Local Government and Communities**





## Come Along for Fun With Agriculture



*Department of Agriculture and Food Development Officer Nancy Gannaway checks out recipe cards in the new education trailers with Livestock Industries Executive Director Kevin Chennell.*

An educational trailer incorporating state-of-the-art technology will be at the South West FoodBowl Festival in Nannup on October 17 and 18 to provide children with a better understanding of agriculture and career opportunities in the sector.

The trailers presented by the Department of Agriculture and Food, Western Australia feature iPads with agricultural applications to entertain young children and enable clients to download and print fact sheets from the internet.

Children can have their picture taken in the trailer's photo booth and dress up as a farmer, scientist, chef or exporter to get them thinking about future career options!

Buy West Eat Best recipe cards and information for owners of a small property will also be available at the display.

For more information go to  
[www.swfoodbowlfestival.com](http://www.swfoodbowlfestival.com)

### Hon Terry Redman MLA

Member for Warren-Blackwood

*Your local representative in the Parliament of Western Australia. Please contact me if I can assist you, your family or community group.*

PO Box 327 Denmark WA 6333  
Ph: 08 9848 3171 Fax: 08 9848 1595  
FreeCall: 1800 644 811  
E: [terry.redman@mp.wa.gov.au](mailto:terry.redman@mp.wa.gov.au)  
[www.terryredman.com.au](http://www.terryredman.com.au)

Authorised by T Redman, 5/78 Strickland St  
Denmark WA 6333



NATIONALS for Regional WA

## ANNUAL GENERAL MEETING

### NANNUP SPORT AND RECREATION ASSOC

DATE: MONDAY 13TH OCTOBER 2014

TIME: 7.00 P.M.

VENUE: NANNUP REC CENTRE

AGENDA:

Welcome and roll call

Apologies

Presidents Report

Treasurer's Report

Election of Office Bearers

#### General Business:

1.The committee recommends that the following be changed in the constitution:- that the words "1st July" in section 7.1 of the constitution be changed to "1st April".

2.Membership Fees

**All members are invited and any interested community members most welcome.**

**Nannup Pharmacy**  
Invites you to an exclusive  
**Dr. LeWinn's VIP Event:**  
**A Touch of Hollywood**

**At:** Nannup Town Hall  
Warren Road, Nannup

**Date:** Monday 3<sup>rd</sup> November, 2014  
**Time:** 6.30pm **Booking Fee:** \$10

Featuring our great value Christmas Skin Care Packs and Dr. LeWinn's NEW Eternal Youth Cream.

Includes a complimentary glass of Champagne, Nibbles, and a \$15.00 voucher for purchase of Dr. LeWinn's products (excludes promo gift packs).

**Be in the Raffle to win a fabulous giftware basket!**

To reserve your place at this exclusive event,  
Please phone: Vicki or Tracey - 9756 0002

**DR. LEWINN'S**  
OLD CAN WAIT

[www.drlewinns.com](http://www.drlewinns.com)

# CAR BOOT SALE

**WHEN: SUNDAY, NOVEMBER 2**  
**10AM – 2PM**

**WHERE: LOOSE GOOSE CHALETs**  
**BARRABUP RD, NANNUP**

**WHY: FUNDRAISER FOR NNVBFB**  
(NORTH NANNUP VOLUNTEER BUSH FIRE BRIGADE)

Sausage sizzle, coffee and cake, other fun activities.  
Sellers - \$15/bay, arrive at 9am, BYO tables and chairs.

For more information, and to register your interest as a seller, contact Jo 9756 0524, or Julie 9756 2242. Early bird prize for those registered by Friday, Oct 24. Entry forms will also be available from September at various business outlets in Nannup.

## *Nannup ReTreads On The Road*

Well the warmer weather is here and we had a nice ride to Cowaramup Brewery and saw some lovely homes and paddocks and enjoyed a lovely meal at the Brewery It was even a funny day with Sue doing a backward somersault off the bench much to the amusement of everybody there We were glad to welcome a new couple Graham and Cheryl in their Mini, they enjoyed the day. Well the next meeting at John and Sue's is 6.30pm 10th November as we are riding to Tasmania 4th October until 9th November so we should have a few stories to tell when we get back. Brian Collet from Tathra is organising a ride in October so contact him for details. New members are welcome its all free you just need wheels  
Regards John Scott



## **DIY Removals or Storage**

*You pack it - We move it*

***Hire a 20ft sea container***

**Call for quote**

**Bridgetown Towing 0437 495 554**

## **Paul Flux**

B. Arch.  
ABN 53 254 833 088

**Tel 040 800 2199**

PO Box 197  
Nannup 6275

**STONWORK**  
**BRICKLAYING**  
**PAVING**  
**LIMESTONE BLOCKWORK**



## SECRET MEN'S BUSINESS



If your husband, male partner or male friend has gone to Nannup Hardware on a Saturday morning and not reappeared for a considerable length of time, you could well have wondered just what does go on in there. One Saturday morning Brett disappeared but when he came out he had a cordless drill for us to take to Zimbabwe and very kindly donated by Nannup Hardware. Tatenda, Living Foundation's coordinator in Bulawayo was thrilled to receive it. As you can see, though, his son, Daniel, was already embarking on the road to being part of the secret men's business mystery associated with hardware stores. He needed his lookalike drill case!



There could be even greater cause for concern for anyone disappearing into a hardware shop in Bulawayo. There would be no problems at all with 'Divine Favour Hardware' of course and you'd probably be pretty safe with 'Easy Build Hardware' but then it begins to get worrying going downhill from 'Hard Knocks Hardware' to 'Early Ashes Hardware'. However, the hardware shop may be the least of your worries. A visit to get your eyes checked could definitely turn into some very unexpected secret men's business! Once again, though, the faithful hardware store may just have the answer to that as long as you choose the right one after your eye clinic visit. I'd suggest maybe 'Keep It Up Hardware' could be a good place to

start. I didn't go in to check that one out—I think secret men's business is probably best left a secret!

Story & photos supplied by Louise Furniss



# Southern

## Glo

"Focusing on your safety"

Suppliers of

Glow in the Dark & Reflective Products

Contact Gavin & Nat

0418 925 896

Thats the Glo... Southern Glo

Great for Rural Use  
Falls Prevention  
Kid Friendly

Benefits:

- Low Maintenance
- Increased Visibility
- Clean Energy Solution

sales@southernglo.com.au  
www.southernglo.com.au

Find us on  
 Facebook



## The Goose Shed

Available for conferences,  
seminars, retreats, weddings,  
parties, club meetings...

Barrabup Rd, Nannup

Ph: 9756 1170

Email: [info@loosegoose.com.au](mailto:info@loosegoose.com.au)

[www.loosegoose.com.au](http://www.loosegoose.com.au)

# Historical Society Pages

## History Of The Nannup Car Club

This story came about with the writer asking Chris Scott what was the make and history of the old car parked at the side of his shed in Balingup Road, Nannup. Chris told me it was a Holden and that he had recently sold it to a chap who wanted the roll cage which was still fitted inside. Further questioning of Chris as to why it had a roll cage he explained that he used to race this car at the Nannup Race Track which was an extremely

popular sport in the late 1960s to early 1970s. As luck has it a long time Studebaker Car Club friend in

Adelaide sent the writer a story he found on the Nannup Race Track which in turn was shared with Chris Scott and another local Jim Green who also raced cars on this track. The Nannup Historical Society does not have any photographs of the Nannup Race Track in its archives, but thankfully Jim Green, a staunch race club member since its inception, has very kindly provided all the photographs in this article. Jim also provided copies of newspaper clippings and memories of his days racing cars on this track and together with other pieces of research by the writer have come up with the



*Original Race track in old Gravel Pit 1967—68*

following article on the History Of The Nannup Car Club. In 1967 a group of Nannup locals got together to form a car club and in the first year the club mainly held trials and hill climbs in registered road cars. At this point a strong alliance was formed with the Bunbury Car Club with each club's members supporting each other. Initially the Car Club used the old gravel pit which was located some two kilometres south of Nannup town near the old Neverman's mill next to Longbottom's farm as its race track. Hill Climbs were conducted in 1968 using the firebreak up Mount Folly at the back of Dunnet's farm. A 1968 newspaper clipping states the South West Drag Association held its drag meeting at the old Busselton air strip with one of the winners being Jim Green in the A class stocks section. Another newspaper clipping in that same year shows the Nannup Car Club held a very successful rally through the nearby bushland of Nannup on a fifty six mile course with the time allotted of one hour and forty minutes. Fifteen entries started but only six made the last checkpoint. Phillip Singleton won this event with Jim Green coming in second only half a point behind. A second motor rally was run by the Nannup Car Club later that year with thirteen competitors this time over a fifty nine and a



*Brian Mead in an early model Falcon Sedan at Hill Climb 1968. Flagman Fred Green*

half mile more difficult course of winding bush tracks and forestry roads. The allocated time for this rally was two hours and twenty minutes. This event was won by Laurie Green with his navigator Charles House. They won by a quarter of a point beating the second car driven by Charlie Marlow and navigator Raymond Marlow. In January 1968 commencement of a purpose built race track was started at the Nannup recreation ground next to the town oval. David Blythe was the Nannup Car Club's president and with help from Colin Resta from the Bunbury Club the club set about the task. Local transport company R. & N. Palmer played a big part in the tracks construction. Colin Resta's input was priceless as he had been involved in the building and maintaining Bunbury's Blinks Raceway track and was also very experienced in the earthmoving industry. Colin worked tirelessly sharing his time between Bunbury and Nannup and on many occasions he would step from the grader to his racecar to compete and he was a quality racer. The back straight was on the old defunct



*Jim Green in his X2 Holden drag racing in 1968 at Old Busselton Airstrip*





*Putting the Start/Finish Tower in place at Nannup Race Track 1968*

four local cars and were very competitive against the more experienced visiting drivers in Stocks, Super Stocks and the Hot Rod division. It was not unusual for the small town of Nannup to attract around a thousand spectators to a meeting. Most of the sedans racing at the time were Holdens, but some experimented with various British cars trying to find that winning edge. In January 1969 the Nannup Car Club hosted the official opening of the club's season and the new track. Forty three cars from Bunbury, Busselton, Donnybrook, Collie, Manjimup and Wagin took part in the opening parade, A big crowd saw five classes of hot rods compete in eighteen races including a Ladies' 4 lap event. The second meeting held at Nannup was a Twilight Meeting on the 15th February 1969. On the 1st June 1969 the Nannup Car Club hosted the South West Motor Sports Association Championship with the winner of that event being John Scott in a Citroen front wheel drive 6 cylinder car with local Andy Della in his FJ Holden in second place. The championship was held over a twenty five lap feature race



*South West Championships at Nannup Race Track 1st June 1969*

as part of the six hours of racing on the day. A spectacle organized for this day were two sky divers formally from South Australia coming over from Bunbury to give an exhibition of sky diving. The eight member clubs of the S.W.M.S.A. were Augusta/Margaret River, Boyup Brook, Bridgetown/Greenbushes, Bunbury, Collie, Donnybrook, Manjimup, and Nannup. Fifty nine cars nominated to contest the championships for the seven classes of racing cars. These being Junior Rods - car to be less than 12 horse power, driver to be under 16 years of age and the only modification permitted is lowering of the car, Stock Production, Super Stock, Modified Production, Hot Rods, Modified and Super Mods. At the conclusion of the Championship events the Ladies' Race Mechanics Race and the "Butchers Picnic Race" wound up the programme. 1969 to 1971 Nannup Car Club programmes show Dave Blythe to be the President, Pat Blythe Secretary, Charles House Treasurer and Fred Green Pit Marshall. Some of the local drivers in these programmes show the following names - Men: Charlie Marlow, Dave Blythe, Brian Green, Jim Green, Laurie Green, Alec Bornatti, Andy Della, Chris Scott, Harold Lyons, Jim Delborello, Ken Twyerould, Raymond Marlow, Phillip Singleton, Sam Treadgold, George Napier, Vic Gizzarelli, Andy Kaptein, John Pillage, Alf Lorkiewicz, Bevan Blythe and Barry Rowcliff - Ladies: Pat Blythe, Betty Bornatici and Eileen Rutherford.

Nannup horse racing track along next to North Street. The day for the track was out of the hill with Palmer's 950 Loader driven by Jeff Cole, spread on the track as the base, then gravel was trucked in as topping, graded and then rolled with a Bornatici truck. The old tower from the defunct Nannup horse racing track was towed up by Jim Green in his 1965 HD X2 Holden sedan and put in place to be the start and finish tower for the car races. Three laps of the race track measured one mile. The Nannup Car Club at one stage boasted thirty

# Historical Society Pages



*Car racing at Nannup Track 1970*

as part of the six hours of racing on the day. A spectacle organized for this day were two sky divers formally from South Australia coming over from Bunbury to give an exhibition of sky diving. The eight member clubs of the S.W.M.S.A. were Augusta/Margaret River, Boyup Brook, Bridgetown/Greenbushes, Bunbury, Collie, Donnybrook, Manjimup, and Nannup. Fifty nine cars nominated to contest the championships for the seven classes of racing cars. These being Junior Rods - car to be less than 12 horse power, driver to be under 16 years of age and the only modification permitted is lowering of the car, Stock Production, Super Stock, Modified Production, Hot Rods, Modified and Super



*Maintaining the race track with the club's old Chamberlain Champion grader 1970-71. Driver Jim Green*

# Historical Society Pages

Racing at Nannup continued through until 1972 when a recession hit the area and many of the club members had to leave town for work reasons . A lot of the Nannup Car Club members went up to Mount Newman to work in the mines and whilst there started up the Mount Newman Hot Rod Club . Also the new night run speedways were up and running at Collie and Bunbury , racing on alternate weekends which starved Nannup of the top competitors as Collie and Bunbury were

paying prize monies . Sadly this era of Nannup sporting history was relatively short and very little remains of the Nannup Car Race Track as the dirt banks have been reshaped to form part of the golf course that now occupies the southern end of the site.



*Natalie Jackson's grandfather's donated First Aid Kit*

## HISTORICAL SOCIETY NEWS

Kerry Cockburn-Campbell granddaughter of former constable in charge of the Nannup Police Station from the late 1950s to early 1960s , Kenneth Johnson , kindly donated to our Historical Society a large framed set of three photographs which was presented to him in appreciation by the Committee of the Nannup St. John Ambulance Sub-Centre .

Natalie Jackson of Templemore also very kindly donated her grandfather's D.H.A. portable first aid kit still in its original steel carry box with the contents complete . Natalie has since donated more historical items from Templemore to remain in their 'home' town of Nannup on display in our Society rooms. At the Society's September meeting it was pointed out that Nannup town will officially be 125 years old on the 9th January 2015 and that Nannup should be extremely proud to celebrate this historic event and members were asked to come back to the next meeting with suggestions on what the town should be doing to celebrate this special one and a quarter century occasion . Some suggestions were a "Back to Nannup Reunion Day" and a special historical edition of the Nannup Telegraph similar to what Northdiffe have just put out for their 90th Anniversary .

The next meeting of the Nannup Historical Society has been scheduled for Saturday 11th October 2014 in the old Nannup Road Board building commencing at 2.00 pm . People wishing to become financial members or in donating old photographs and artefacts of the Nannup district history to our Society would they please ring the writer on 9756 1863 or 0409 376 372 .

*Compiled by Neville Tanner on behalf of the Nannup Historical Society (Inc.)*



*Presentation to NHS President Charles Gilbert of Kenneth Johnson's framed set photograph*

## ALL SAINTS ANGLICAN CHURCH NANNUP IS 100 YEARS OLD

A service of celebration for the centenary year of the building of the Anglican Church in Nannup will be held on 26<sup>th</sup> October 2014 at 10 am with a luncheon to follow.

Please spread the word to family and friends who have had any association with the church over the past hundred years.

For further enquiries phone:  
0408 085 453 or 9756 0234(evenings preferred)

## NANNUP CRAFT GROUP

Once again the Craft Ladies of Nannup have raised over \$3500 in their August raffle for Cancer Research.

The monies were made from a quilt designed and crafted by our group along with a table runner doyley and a doll, plus the sale of daffodils, craft items, books and personal donations.

Over the past 15 years we have raised over \$34,00. This money goes towards Breast Cancer research conducted at the University of W.A.

This year the Quilt was won by Mrs Walker from Geraldton. The remaining prizes went to Busselton and Nannup.

Thanks to Kelva and Bev for their donations of prizes towards our raffle which they have both done for many years.

Thank you to everyone who purchased tickets and for your continuing support of such a worthwhile charity.

**Well Done Girls**  
Kaye Locke





## Police Report with Sergeant Duncan Swadkins, Nannup Police.

Towards the end of September we conducted a joint operation with Busselton Police and with the assistance of Augusta, Bridgetown, Donnybrook, Dunsborough Police and Police search dogs we conducted a series of search warrants in the Jarrahwood community.

We seized 3 hydroponic setups, 80 cannabis plants, 220 grams of cannabis, 200 cannabis seeds, 1 stolen firearm and 3 ecstasy tablets. A number of people will be facing several drug charges. This was an excellent result for us however I would like to point out that the majority of the Jarrahwood community had no part to play in these offences and only a small section of the community were responsible.

By working closely with our colleagues within the district we will continue to conduct large and small scale drug operations within Nannup and the surrounds. If you have any information about drug dealing in our area please call us on 9756 3555 or ring crimestoppers on 1800 333 000.

Due to an increase in complaints about speeding in the back roads of Nannup we have decided to conduct speed checks in those areas. There are obvious risks to speeding on these back roads and what I am not going to wait for is somebody, especially a small child or elderly person being struck and seriously injured by a car because people are in a rush to get somewhere. Please watch your speed or your likely to be hit in the pocket. Our evening shifts have resulted in a disappointing outcome, in the past month we have charged two locals with drink driving offences. Both drivers at least 2 and half times over the limit. I understand the issues with living in a small country town and there being no public transport or taxis however its not as if people haven't being warned. Drink driving is dangerous and puts lives at risk, we will be working hard to ensure that we have no serious traffic crashes in our area.

Please look after yourself and each other.

**Sergeant Duncan Swadkins**

**Officer In Charge Nannup Police Station**

### Unique, Bespoke and Inspiring

....showcasing the region's artisans and producers....



16 Warren Rd  
Phone: 97561901  
atasteofnannup.com.au

Open  
Tues—Sun  
10-4  
and Public  
Holidays  
and when the  
flags are out

Join us for  
Birthday cake  
8th of October  
Weds 11 am  
Jeanne, Heather  
and Linda

### NANNUP BOWLING CLUB INC

SUMMER SOCIAL BOWLS ON

WEDNESDAYS (WEATHER PERMITTING MID OCTOBER)

5.30 8.00PM.

SAUSAGE SIZZLE AVAILABLE.

MAKE A TEAM AND COME ON DOWN & HAVE  
A FUN NIGHT, BOWLING BALLS AVAILABLE.

PH 0403 044 747

**WASSA'S FORMWORK N CONCRETE**  
SHEDS-HOUSESLABS  
BRIDGES-CULVERTS  
FEATURE STAIRS  
RETAINING WALLS  
SUSPENDED SLABS

**WHEREVER  
WHENEVER  
WHATEVER**

NANNUP BASED & TOOLED UP  
FOR ALL SURROUNDING AREAS.

PAUL WASSELL 9756 1420  
0414 813582

**Rod Lindorff**

Ph/Fax: 9756 0280

Mobile: 0428 582 280

**Womrock  
Maintenance  
Service**



*Professionalism  
at a fair price*

## Magical Splendour In The Enchanted Forest (front cover)



*Freespirit Trapeze artist Jo Homer with her students at Nannup Recreation Centre*

Mid afternoon on Sunday 21st of September in Nannup saw another fabulous performance by 42 students of Freespirit Trapeze with participants ranging in age from just four years old to adult. Under the expert guidance of experienced aerial performer Jo Homer, the group excelled in putting on a wonderful show entitled 'The Enchanted Forest' to a

large gathering of family, friends and locals. On this very wet day, the Dragonflies, Unicorns, Forest Creatures, Tiger, Goblins, Green Men, Faeries, Witches, Wizard & Lizards brought light and energy to Nannup Recreation Centre. Showing a wide range of acrobatic prowess from vaulting through to the aerial skills of trapeze, silks and hoop, the various groups moved with ease from one scene to another accompanied by music from DJ Ned Wishart and Nannup djembe drummers Tam Bennett and SueClaire Donovan. Having trained in Byron Bay in her early twenties, Jo Homer has gone from strength to strength in producing her fourth show in three years since the inception of Freespirit Trapeze. Finishing with a speech, Jo acknowledged all involved in creating such an inspiring and enjoyable performance including local costume maker Marjorie Skoss and set designer Lewis Horne who brought the stage to life with colour creating a truly magical scene. Also make up artists, painters and parent/carer helpers who had devoted many hours of their time and various talents, Nannup YAC and Nannup Shire. Freespirit Trapeze welcomes students of all ages and skill levels. Contact Jo Homer at [jo@freespirittrapeze.com.au](mailto:jo@freespirittrapeze.com.au) or [www.freespirittrapeze.com.au](http://www.freespirittrapeze.com.au)

*Story by SueClaire Donovan Photos supplied by Jo Homer*

## PREPAID MOBILE PHONES AVAILABLE @ THE CRC

Colour & stock may vary from time of printing.

**NEW! PRICE REDUCED**  
\$199 Samsung Galaxy Ace 3  
5MP camera, 8 GB memory



**REDUCED**  
LG Optimus F3  
Android 4.1  
\$229



Hua wei Ascend y530  
Great 4.5" screen for  
easy viewing  
In Black only. \$149



Telstra T96  
Red  
**ONLY \$49**



4G Wifi Dongle  
\$99

Basic EASYCALL 3 \$99  
Large digits Hear numbers  
Great coverage  
Available in grey or white



Wi-Fi 3G  
Wireless Modem  
\$59.00



**NEW 4G Telstra**  
Wi-Fi  
Modem. \$129  
Connect 5 devices



**Wireless Broadband**



## Nannup Community Diary October

**Monday****Badminton**

9.00am @ Rec Centre. Ph Neville 9756 1863. Coaching available.

**Bingo**

Every 1st Monday of the month.. 1-3pm @ Community House, Brockman St. Any age welcome, organised with afternoon tea supplied by Nannup Branch CWA of WA.

**Revs 45 Indoor Cycling**

7am at Lakeview Fitness Centre for bookings and enquiries please ph Lauren on 0408 921 052

**C.A.K.E (Carers & kids exercise)**

10.15am Lakeview Fitness Centre for bookings and enquiries please ph Lauren on 0408 921 052

**Dance Fitness**

5-6pm at Lakeview Fitness Centre. Call Lorraine, 9756 0832

**Tuesday****Badminton**

7.00pm @ Rec Centre. Ph Neville 9756 1863. Coaching available.

**Tennis for Everyone**

8.00am at the tennis courts. Free if outside.

Ph: Rita 9756 1231

**Cychos Cycling Club**

Meets at Foreshore Park 9 am. Phone Bob 0427 560 303 or Kirsten 0404 891 315

**Circuit Fitness**

9am @ Lakeview Fitness Centre, for bookings and enquiries please ph Lauren on 0408 921 052

**Dru Yoga**

9.30am FREE for volunteers @ CRC

**Meditation**

2.30pm - 'Omm Room' 4 Griffiths Rd  
0428 246 066 (Trish)

**Playgroup**

Playgroup is held every Tuesday morning during the school term from 10:00-12:00 at the Nannup Community Kindergarten. Enquiries: Lorelle Sinclair 0438 975 197

**Nannup Community Kitchen**

Open from 5-6.30pm at Nannup Bowling Club. \$5 per head. Under 8 free. Phone Brownie Dickens 9756 0311

**Craft Group**

10-3pm. Meet at Community House. Ph Kaye Locke, 97560260

**Wednesday****Gentle Gym**

9.30am @ Town Hall

The classes are suitable for over-50s, but anyone is welcome. The exercises focus on stretching, flexibility and relaxation. Cost is \$3.00 per session, followed by sharing a coffee together.

**Friends of the Foreshore**

Meets at Foreshore Park at 9am. Ph Neville 9756 1863.

**CWA – Nannup Branch**

Meets every 3rd Wednesday of the month, 11am at the Community House, Brockman Street. A warm welcome to anyone. Enquiries: Pat Twiss 9756 0241.

**Spin & TRX 30mins**

9am @ Lakeview Fitness Centre, for bookings and enquiries please ph Lauren on 0408 921 052

**THUMP Boxing for fitness**

5.30pm @ Lakeview Fitness Centre, for bookings and enquiries please ph Lauren on 0408 921 052

**Barrabup Breakfast**

1st Wednesday of every month, 9am. Everything provided

**Thursday****Glee Club**

5:30pm @ NDHS music room Ph: Val 9756 1560

**Revs 45 Indoor Cycling**

7am @ Lakeview Fitness Centre, for bookings and enquiries please ph Lauren on 0408 921 052

**Circuit Fitness**

9am @ Lakeview Fitness Centre, for bookings and enquiries please ph Lauren on 0408 921 052

**Kids Fit Kit (Fitness for kids)**

3.30pm @ Lakeview Fitness Centre, for bookings and enquiries please ph Lauren on 0408 921 052

**TRX suspension training**

5.30pm @ Lakeview Fitness Centre, for bookings and enquiries please ph Lauren on 0408 921 052

**BigN (Business Initiative Group Nannup):**

Meets every 2nd Thursday of month. 5.30 for 6pm start.

Phone Jacinta Puckey for further details 9756 0602

**Friday****Spin and Gym**

Indoor cycling plus gym workout 9am @ Lakeview Fitness Centre, for bookings and enquiries please ph Lauren on 0408 921 052

**Cychos Cycling Club**

Meets at Foreshore Park 9am. Phone Bob 0427 560 303 or Kirsten 0404 891 315

**Dru Yoga**

1.30pm FREE for volunteers @ CRC

**Wellness Club**

1st Friday of every month at the Shirley Humble Room at 2pm.

Ph Ann 9756 3089 or Kate 9756 3064

**Nannup Historical Society**

Display rooms open 10am-1pm

**Saturday****Filthy Fit**

Outdoor training 7am. Call Lauren 0408 921 052

**Nordic Walking**

8.am. Call Lauren 0408 921 052

**TRX Suspension Training**

9.15am @ Lakeview Fitness Centre, for bookings and enquiries please ph Lauren on 0408 921 052

**Nannup Historical Society**

Meets at Old Roads Board building, Warren Rd on the 2nd Saturday of the month at 2pm. Display rooms open by appointment, contact 0409 376 372

**Sunday****Garden Club**

Ph. Bob Longmore 0427 560 303 for dates & location.

**Garden Village Inc:**

3rd Sunday of every month, 9am at the Community House. General maintenance of the garden.

**Nannup Community Food Garden**

Busy Bees every Sunday from 9.30 am

**What else is on? October**

(Sat)11th & 25th Nannup Markets

Eclipse Full Moon Musical Gathering Wed 8th October

2014 South West FoodBowl Festival 17/!8th October

**What else is on November & beyond?**

Seniors Christmas Lunch 24th November

## Historic Camphor Laurel Tree Gets a Trim

A-Cut Tree Services Crew were in Nannup on Tuesday 9th September to under prune and weight reduce the giant Camphor Laurel tree located at the rear of the Nannup Fire Station. The tree is said to be around 100 years of age with long time residents remembering swinging and climbing its branches during their childhood. The historic tree dwarfed the services crew as they started the trim.

Operation manager, Paul Chapman explained that the routine maintenance and trimming was necessary to alleviate future damage to the DFES Building and also the Nannup Shire building located in the centre of town on Adam Street. As the cherry picker and arborists got to work sawing limbs from this beautiful giant, the crew expected to be working all day long producing around fifty cubic metres of mulch.

*Story & pictures by SueClaire Donovan.*

*Left top and centre, Josh Bucholz from A-Cut Tree Services goes out on a limb. Bottom, Cherry picker in the canopy of tree.*



*We're changing  
our name to this...*

**The**  
**MORTGAGE GALLERY**  
PARTNERING WITH **SMARTLINE**

**smartline**  
personal mortgage advisers

*Same great service, different name!*



**08 9751 4118**

**Greg Moss 0414 724 576**  
**Peter Camplin 0417 935 459**

56 Causeway Road, Busselton WA 6280  
Australian Credit Licence 385325

## Souwest Glass Service



**24 HOUR 7 DAY  
EMERGENCY REPAIRS**

**Steve Hawkins**

Glazier-Glass and Leadlights

P (08) 9764 3663

F (08) 9764 3387

M 0428953753

E [stevehawkins@westnet.com.au](mailto:stevehawkins@westnet.com.au)  
W [www.balingupglass.com](http://www.balingupglass.com)



## Local Emergency Management Committee (LEMC) Update

Behind the scenes of an emergency incident there are many groups working hard to assist the community to get back on its feet and to ensure that the impact of the emergency is reduced.

In Nannup the Local Emergency Management Committee (LEMC) meets four times per year to review the plans which are in place for risk management, response and recovery of an emergency incident. This is a legislative requirement under the Emergency Management Act.

The Nannup Local Emergency Management Committee plays a strategic and important role in reducing the risk of emergencies. Good working relationships and comprehensive understanding of the plans, roles and responsibilities is imperative to achieving the goals of protecting residents and infrastructure.

Organisations that are currently represented on the Nannup LEMC include:

The Department of Fire & Emergency Services, SES, The Department of Parks and Wildlife, the Shire of Nannup, State Emergency Management Committee Secretariat, Nannup Community Resource Centre, the Department of Agriculture, Water Corp, Telstra, Nannup District High School, Western Power, Main Roads, the Police, Department for Child Protection and Family Support, St John Ambulance, Nannup Health Service, Nannup CWA, Australia Red Cross and Nannup Lions.

These organisations report at each meeting the activities that they have undertaken in the areas of prevention, preparedness, response and recovery of emergencies in the Shire.

Twice each year the committee undertakes an exercise to practise an emergency situation. These exercises identify any areas that may need to be addressed, and provide an opportunity for each organisation to see where they fit into the process and how they can assist.

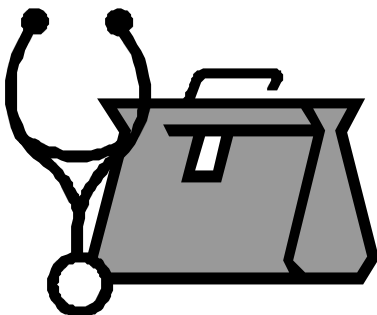
The meetings and emergency exercises provide networking opportunities for the agencies to develop working relationships that ensure that the agencies can work together effectively in an emergency situation.

Currently the Terms of Reference of the Nannup LEMC are being reviewed which provides an opportunity for other organisations and agencies to be included in the LEMC group. If there is an organisation that would like to be involved in these meetings, please forward a letter of request to Rob Bootsma, Community Emergency Services Officer at the Shire of Nannup.

For more information on the Nannup LEMC please contact Rob Bootsma at the Nannup Shire on 9756 1018.

### New Doctor in Town

Doctor Karl Erath is now available for consultations on Wednesdays from 10.30am. Bookings can be made through the Nannup Health Service on 97563800.



### SELF-INKING & RUBBER STAMPS

*Made to order*

Contact Jenifer or SueClaire at the Nannup CRC for more information.

Phone: 9756 3022



### Learmond Carpentry

- ⇒ New homes
- ⇒ Renovations
- ⇒ Extensions
- ⇒ Asbestos removal
- ⇒ Plans
- ⇒ Decks



All your carpentry needs with one team.

Local, Reliable, Friendly, and Honest.

George has over 25years experience in the building trade and over 18years in Nannup. Why go anywhere else.

For any enquiries or for a free quote call George on 0412051325.

### HOUSESITTER



Retired mature lady  
Animal/pet Lover

“Have a stress free holiday on me”

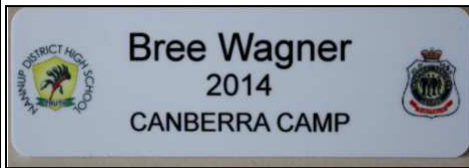
Mob: 0419 049 079



# NDHS Happenings



## Canberra-here we come!



Upper school students from Nannup District High School were pleasantly surprised on Monday 1st September when local Nannup resident and President of the Returned and Services League (RSL) Nannup branch Norm Steer presented the group with name badges.



Mason Newnham and Zoe Dickson receive their badges from Norm Steer, President RSL Nannup with NDHS teacher Chris Buckland looking on.

The reason for this generous donation is because the students are set to embark on a trip to Sydney and Canberra. A significant part of their tour will be a visiting the National War Memorial in Canberra.

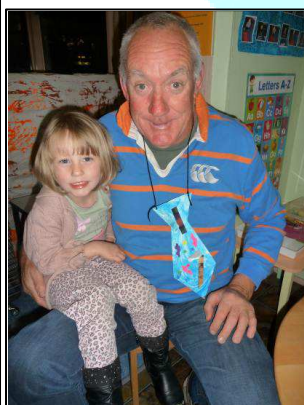
Departing mid-September for six nights, the students head to Sydney first, then on to Canberra with a jam packed educational and vocational itinerary all the way. During their travels they will visit various sites of Sydney City, Parliament House Canberra, Cockington Green Miniature Village, CSIRO Discovery Centre, Australian Institute of Sport, Snowy Hydro Discovery Centre at Mount Kosciuszko, National Museum of Australia, Royal Australian Mint, Geoscience Australia, Canberra Deep Space, National Portrait Gallery and the National Science and Technology Museum. Bon voyage NDHS!

*Story by SueClaire Donovan.*

*Pic supplied by NDHS*

**Dads challenged.** On Thursday 4th September the Nannup kindy kids held an activity evening to celebrate Father's Day. There were Dads, a Grandad and even an Uncle who came along to Kindy. The children had fun taking their special visitor around to each activity station. Station 1 was the 'Construction Site'; where they constructed a toolbox together. One Dad commented that "it was hard not to take over doing the whole project!" Station 2 was 'Use your Noodle'. This was a great hands-on activity using recycled packing noodles and wetting them to stick together. The Dads' thinking skills were challenged to make 3D models using the noodles. Station 3 was 'Fashion Wear' where the children designed a tie for their Dad and Station 4 was 'Design a Car!' where everyone could use their creative skills at the collage table. After having a supper of fish and chips and juice, the children showed off their creative thinking by making magnetic 3D shapes and Crazy Creatures. The Dads also enjoyed looking around the room at the students' current work on the life-cycle of a frog and our frog sensory pond.

*Sue Hughes (Nannup Community Kindy Teacher)*



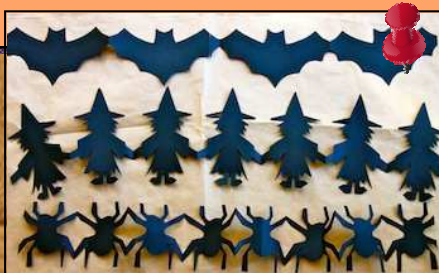


# 6275 Youth/kids

## HALLOWEEN

Here are a few fun facts about Halloween for those who like to observe this tradition.

- \* The first Jack O'Lanterns were actually made from turnips.
- \* Samhainophobia is the fear of Halloween
- \* Trick-or-treating evolved from the ancient Celtic tradition of putting out treats & food to placate spirits who roamed the streets at Samhain, a sacred festival that marked the of the Celtic calendar year.
- \* Scarecrows, a popular Halloween fixture, symbolise the ancient agricultural roots of the holiday
- \* Halloween celebrations in Hong Kong are known as *Yue Lan* or the "Festival of the Hungry Ghosts" during which fires are lit and food and gifts are offered to placate potentially angry ghosts who might be looking for revenge.



## CRAFT IDEA

### Make Halloween paper chains

Decorating your house for Halloween is a fun way to get crafting with your kids. Choose from witches, bats or spiders to decorate your house for Halloween.

#### What you need:

- Large sheet of black paper
- Scissors
- Bat/witch/spider template shape

#### How to:

Choose which shape you want to make: witch, bat or spider.

Cut roughly around the shape. Now place it onto the edge of your piece of paper.

Make a fold that will fit the whole shape; if you want to you can loosely tape the template to the top fold.

To make the paper chain work, there will be two sections on either side that are not to be cut. On the printable, they are marked with a dotted line, so don't cut along the dotted line or your chain will be 'broken' (watching the video will be helpful).

Now using that first fold as a guide, concertina fold the rest of the piece so that you have about five or six layers beneath the top layer.

Cut around the shape, leaving the dotted edges uncut.

When you've finished you should be able to open out a whole chain of spiders, witches or bats.

Make lots and string them up across the front of your house for Halloween. Spooky!

*"Happiness is not something ready made. It comes from your own actions"*

*Dalai Lama XIV*



Nannup's **Historical Calendar for 2015** will be released soon. Watch out for the date. Limited number available and all funds are going to the Living Foundation who also support the Nannup Community Kitchen.

## PERSONALISED BUSINESS CARDS

### MADE TO ORDER

Contact Cheryle  
or SueClaire

at the Nannup CRC

97563022

## HAMPTON PARTNERS

### NANNUP



Your Local, Professional Accounting Firm

For assistance with your financial affairs,  
be it taxation, business or other financial needs.

67 Warren Road, Nannup WA 6275

Phone: (08) 9756 3063

Email: [administrator@hpb.com.au](mailto:administrator@hpb.com.au)

Open: 9am – 4pm Fridays



## Poetry Corner

### PENSIONERS RULE – OK!

When I walked down the street cars would beep, and I'd get admiring glances,  
But now, even dressed up to the Nines, I wouldn't fancy my chances.

I exercise as hard as I can, but I have to make frequent pauses  
I'd have easily done it in days gone by, now I'm working against gravitational forces!

Lines have appeared where once there were none that no costly creams will remove.  
My porcelain beauty has all but gone, my complexion I just can't improve.

With my batwing arms and varicose veins I must look a terrible sight  
I don't need to dress up at Halloween to give the children a fright!

My hair's gone thin and the grey's showing through and I've used colours from A to Z  
The hair that falls out used to regrow, now there's more on my brush than my head.

I've always had the most beautiful teeth, a feature for which I was known  
I now put them in a glass at night, as I'm afraid they're no longer my own.

The exercise classes I no longer attend - after I heard disparaging voices  
Because every time I exerted myself, I'd make embarrassing noises!

I still love Christmas and birthdays too, to receive presents I'm always delighted,  
But I have to make sure there's a toilet nearby in case I get over-excited.

One thing that improves as we grow old, that's lost on the youth of today  
Is Wisdom – it's something more precious than gold  
So! Pensioners Rule O.K.!!

M Littler



**NANNUP BOWLING CLUB INC.**  
Calling all previous members, new  
members and women, the club would  
love to have you support the  
**BOWLING CLUB**

**This season the league has allowed  
mixed teams, i.e. women are allowed  
to fill in if the male members are not  
available to play.**

**Please contact:- Jim Green**

**Ph:- 9756 1045**

### ATTENTION NANNUP BUSINESSES !

**Please attend if you support a business  
representative group in Nannup**

### BIGN 2014 AGM -

Rescheduled due to lack of numbers

Thursday 9th October (5.30 for 6pm start)

Nannup Bowling Club

BIGN cannot continue without local business support

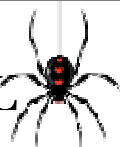
### BUSSELTON PEST & WEED CONTROL

Health Dept Lic No. 54  
Your No. 1 locally owned &  
operated Co. with over  
30 years experience

PH: 9754 2912 FAX: 9754 3924

MOB: 0407 491 155

**7 DAYS A WEEK**



## Word of Mouth

### Country Living

Classic country  
homewares & gifts.

Vintage collectables

68 Warren Road Nannup Ph 9756 0080

Open Wed-Sat  
10-4pm  
Sun 10-1 pm



# CLASSIFIEDS

## PUBLIC NOTICES

**HAPPY 1ST BIRTHDAY 17.09.14  
LENNY PEARS**



**TO OUR BRAVE LITTLE LENNY  
LOTS OF LOVE & SQUEEZES  
FROM NAN & POP XXXX**

### All Saints Anglican Church Is 100 years Old

A service of celebration for the centenary year of the building of the Anglican Church in Nannup will be held on Sunday October 26<sup>th</sup> at 10am.

This will be followed by a buffet lunch in the Shirley Humble Room, across the road at the Shire Offices.

Please spread the word to family and friends who have had any association with the church over the past one hundred years. Everyone is welcome to share this happy occasion as this little church and its grounds have played a part in many happy town activities. Bring your photographs and share your memories.

For further enquiries phone: 040805453 or 97560234 (evenings preferred)

**Nannup Carols  
by Candlelight  
Sun 14th December**



Time and place to be announced closer to the day but put the date on your calendar!



Nannup Lions are still collecting old spectacles and now also hearing aids.



*If you have any of these you no longer want, please drop them off at the Nannup Pharmacy.*



THANK YOU to everyone who offered their condolences and support on the passing of Brian Mawby-Brown last month. Special thanks to Di Piper and Louise Quinlivan for making the Star Quilt, to the Friends of the Darradup Bush Fire Brigade for doing the catering and of course to the wonderful staff at Nannup Hospital for making Brian's final days as comfortable as possible.

Nancy Tang

### Foodbank

The 5<sup>th</sup> Annual Nationals WA Foodbank drive is on again from the 6<sup>th</sup> to the 10<sup>th</sup> of October.

Nannup's collection day is the 8<sup>th</sup> October.

Any non-perishable items can be left in the Foodbank box at the Nannup CRC. All donations received with thanks from Foodbank Australia.

### Seniors Discount Booklets

Also from Nationals WA's Colin Holts office are the Seniors Discount booklet. If you hold a current Seniors card, call in at the CRC and pick up your booklet today.

## FOR SALE

'Flowers on request'

*Flower arrangements & bouquets*

9756 1910 or 0414 777 649

yvonne.adam4@bigpond.com



## SITUATIONS VACANT

### NANNUP GARDEN VILLAGE INC

Volunteers for the 2015 Flower and Garden Festival

Volunteers Positions available:

- Logistics Coordinator
- Volunteer coordinator
- Children's activity organiser
- General Festival Volunteers

All enquiries can be in writing to NGV, 10 Warren Road, Nannup or

Contact Secretary Yvonne Adam 0414 777649



# Telegraph n Tour



Going someplace interesting?  
Why not take the Telegraph on  
tour with you?



*Brigid Pennock & Ross Beatty recently toured the QANTAS Founders Museum, in Longreach, QLD. They are pictured inside one of the four engines of a decommissioned 747. The 747 was named 'The City of Bunbury' in 1979 during the anniversary of WA as Bunbury was the largest city outside of Perth and the title 'City of Perth' had been allocated to another aircraft.*

Thanks to everyone involved for getting the Snappers off to a flying start! The last meeting of the Nannup Snappers was held on Thursday 11th September. A 'Show and Tell' of members photos was held followed by a training session on "Know Your Camera" presented by Cheryle Brown. (Since the session some participants have been heard to say "my camera has been confidently set on "manual" ever since! ")

On the following Saturday, eleven members enjoyed the lovely gardens & morning tea at Templemore. It is the plan of the group to have a Saturday morning meet after each Thursday night to give the opportunity to those unable to attend evening sessions to still be involved.

Every month we will have 2 themes, this month being "Water" & "Typically Nannup". So if you want to join in the fun of sharing your photos, get snapping, then choose and save up to two photos (from each theme), on USB and take them to the CRC before our next meeting on Thursday 9 October.

Looking forward to seeing everyone's Water & Typically Nannup shots!

## nannup snappers

September Themes:  
**WATER and/or  
TYPICALLY NANNUP**



- You may choose either or both of the themes
- Then by Thursday 9 October 2014, copy the photographs you would like to share onto a USB & deliver to Nannup CRC.
- Max 2 photographs (per theme)

There is no wrong or right, just your personal interpretation!

ENJOY!



Supported by

## HIGH PRESSURE CLEANING

- ✓ High Quality Cleaning & Sealing
- ✓ Brick & Concrete
- ✓ Budget Rates
- ✓ Top Results

**Mobile : 0428 475 795**

## NANNUP ELECTRICS

MICK BROWN EC004511

ELECTRICAL INSTALLATION & REPAIRS  
PUMP, SATELLITE DISH,  
& TELEPHONE INSTALLATIONS

P O Box 86  
Nannup WA 6275

Mob 0418 955 698  
Fax 9756 0329

AUSTEL-B 21132WA



## *In the Nookery -October*

Boxes, boxes and more boxes! Just when we thought the shelves couldn't get any fuller, we turn around and another box of books appears. Thanks to all those who have donated in the past month. As there is only limited space on the shelves, we welcome books in **good condition only**.

Visitors absolutely love the idea of our Book Nook and are encouraged to take as many books as possible, but we find many prefer just a couple, as they travel lightly. We have an 'Australiana' section which covers Road maps/travel/camping, wildflowers (why not come in and get a reference book as the wildflowers are now in bloom), birds and memoirs, even the odd humorous titles too.

If you haven't poked your head in the Book Nook yet, please come and browse, opening hours are Mon-Fri 9am-5pm.



Association  
AGM

Nannup Community Resource Centre Inc

Wednesday 29th October at 6pm

Nannup CRC

For enquiries please contact Cheryle

nannup@crc.net.au - 9756 3022

## **D S MILLING CO P/L**

**KARRI - MARRI - JARRAH - PINE**

**MILL DIRECT PRICES:**

- **STRUCTURAL TIMBER**
- **GARDEN SLEEPERS**



**NO ORDER TOO SMALL**

**FREE QUOTES**

**FREE DELIVERY**

**FREE SAWDUST STEVE & JULIE NELSON**

**Ph: 9756 0090**

**Fax 9756 0310**

**NANNUP BOWLING CLUB INC.  
IS CALLING FOR AN  
EXTRA ORDINARY  
SPECIAL MEETING  
FOR 5<sup>TH</sup> OCTOBER 2014  
AT 10.00AM, AT THE CLUB ROOMS  
ALL MEMBERS AND INTERESTED  
PARTIES ARE REQUESTED  
TO ATTEND**

## **ANNUAL GENERAL MEETING**

### **NANNUP SPORT AND RECREATION ASSOC**

**DATE: MONDAY 13<sup>TH</sup> OCTOBER 2014**

**TIME: 7.00 P.M.**

**VENUE: NANNUP REC CENTRE**

#### **AGENDA:**

Welcome and roll call

Apologies

Presidents Report

Treasurer's Report

Election of Office Bearers

#### **General Business:**

The committee recommends that the following be changed in the constitution:- that the words "1<sup>st</sup> July" in section 7.1 of the constitution be changed to "1<sup>st</sup> April".

Membership Fees

## **BLACKWOOD**

### ***Air Conditioning***

*London-Nannup*

**Supply and installation of top of the range  
air-con split systems.**

**If you require advice or a quote  
please give me a call.**

Tony Yerrell  
(Licensed Installer)

Mob: 0427 444 726

splitteam@westnet.com.au

## PREPARING YOUR PROPERTY

**PREPARE. ACT. SURVIVE.**

Our volunteer fire fighters having been preparing for this coming fire season; conducting prescribed burning and undergoing extensive training – *How prepared are you?*

Bushfires happen every summer. They can start suddenly and without warning. People have been killed or seriously injured, and homes destroyed during bushfires; the chances of a bushfire occurring increases as the season progresses.

### IMPORTANT INFORMATION

If you live in bush or near scrub, you should prepare your property and have a bushfire survival plan and emergency kit ready.

A Building Protection Zone (BPZ) is an area extending for 20 metres around a building where there is reduced flammable material. This means there is less material that can ignite, improving the chances that your home may survive a bushfire.



Banjup Fire 2014

Things to consider when preparing your property:

#### Starve the Fire

Clear around your home so that embers are less likely to start a fire when they hit the ground. This will also help reduce the damage caused by fire.

#### Make a Safety Zone

Create and maintain a Building Protection Zone and a minimum two metre gap between your house and tree branches.



#### Fill the Gaps

Houses usually catch fire when embers get into the roof space, a wall cavity, onto ledges or under the house. Prevent sparks from entering your house by blocking all the gaps.

#### Fix the Traps

Do not pile wood against or near a house. Remove any timber, rubbish and old junk lying around.

For additional information and resources:

- Visit the DFES website: [www.dfes.wa.gov.au](http://www.dfes.wa.gov.au)
- DFES' Prepare. Act. Survive.
- For more information please contact DFES Community Engagement on 9395 9816



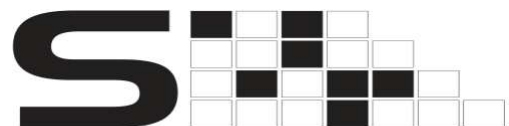
Version 1 – No. 9 series 12/2014



**PARKS AND WILDLIFE**

**EXPLORE PARKS WA**

WA Park Passes  
Now sold at the  
Nannup CRC  
Visitor Information



**Stellar Fraser Photography**

Professional photographer available to capture your photo needs

Weddings | Special Events

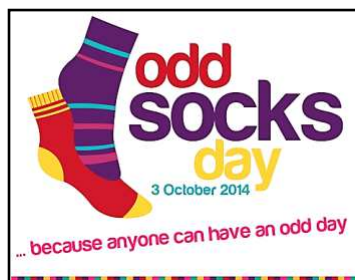
Web Marketing | Editorial

Real Estate | Landscape

W | [stellarfraser.photoshelter.com](http://stellarfraser.photoshelter.com)

M | 0437 650 789





**Odd socks day...because anyone can have an odd day**, is a light-hearted approach to reminding people that anyone, at any time, can have an odd day. It is a national campaign to help address stigma associated with mental illness.

Did you know...?

**One in two** Australians will experience a mental illness at some point in their lives.

**One in five** Australians will experience a mental illness in any year.

Stigma can have a devastating impact on the lives of people with mental illness and their families, friends and carers. It influences how they are viewed and how they see themselves. Stigma can happen anywhere – at home, school, work, hospitals, sporting clubs. If we are to work towards a society where every person is valued, respected, and belongs, we must address stigma.

Stigma can be experienced directly, as when someone is avoided due to a diagnosis of schizophrenia, or is passed over for promotion solely because a manager knows they have had depression. It can also be seen in public perceptions – for example, in the common association of schizophrenia with violence.

People living with mental illness want the same basic things as everyone else:

- A home – somewhere decent to live
- A job or something meaningful to do – a reason to get up in the morning
- A life worth living – friends to share your life with and give you hope.

Stigma can stop people with mental illness from achieving these basic needs. As a result they may live less satisfying and contributing lives than they would like, and are able to. The community is much poorer as a result too.

Feeling that you belong is an important human need. Having friends, local connections and activities you enjoy, as well as making a contribution to your own or to others' wellbeing – all help make life worthwhile.


Myths – such as that people with depression are weak and should just pull their socks up, or that all people with psychotic illnesses such as schizophrenia are unpredictable and to be feared – are hurtful and harmful as well as being inaccurate. Dispelling these myths is important if people with mental illness are to be fully accepted into families, workplaces and communities.

Adapted from (SANE Australia 2013. *A life without stigma: A SANE Report*. & Odd Socks Day website ([www.oddsocksday.org.au](http://www.oddsocksday.org.au)), a project of GROW)

**On Friday 3 October, pull on your odd socks and help stomp out stigma**

- **Wear them loud and proud – encourage everyone to wear odd socks**
- **Use spare odd socks to decorate your place of work, school**
- **See who can come up with the oddest sock idea – sock scarves, sock puppets, sock gloves, sock legwarmers**

**To be in the running for A PRIZE send a photo of your Odd Sock experience to the CRC by 10/10/2014**

(email [nannup@crc.net.au](mailto:nannup@crc.net.au)) or post them to our   
(<https://www.facebook.com/pages/Nannup-Community-Resource-Centre/171363502886866>)

**Where can I get help?**

**In a life threatening emergency call 000**

If you need assistance or support, please:

- Talk to your **GP**, other **health professional** or **someone you trust** or
  - **Suicide Call Back Service: 1300 659 467** or
  - **Lifeline: 13 11 14** or
- **MensLine Australia: 1300 78 99 78** or [www.mensline.org.au](http://www.mensline.org.au) or
- **Kids Helpline: 1800 55 1800** or [www.kidshelp.com.au](http://www.kidshelp.com.au)

# Shire News



## Recreation Centre Update

Construction continues on the Nannup Recreation Centre, with BRC Building Solution (the successful tenderer) getting through the earthworks in preparation for the concrete slab.

Now that the final winter events of trapeze, football and darts are over, the fencing alignment will change in the coming months to close off the main entry doors. These entry points will be temporarily replaced by the northern eastern door on the sports hall and the southern door of the Sports Association rooms.

Unlike other sites where a builder prefers to close the whole facility, the builder and Council have been keen to keep as much reasonable community use as possible. So, please continue to take care when accessing the Recreation facilities.

There will be a funding bodies event on 6 October 2014 to celebrate the beginning of construction, as significant funding has generously been provided by a number of groups including Royalties for Regions, the Department of Sport & Recreation, Lottery West, the Shire of Nannup and the Nannup Sports & Recreation Association.

The Community sponsorship is being managed by the Sports Association and they will no doubt be contacting you soon for your support. Detailed plans can be viewed at the Shire Office.

## E-Books

There are 1,000's of titles available for you, just log onto [wapldmc.lib.overdrive.com](http://wapldmc.lib.overdrive.com) with your Nannup library membership.

## Fire News

### Hazard Reductions

Summer is fast approaching and now is the perfect time to perform your fuel hazard reduction measures to your property.

Property firebreak inspections will commence mid November 2014.

Firebreak variations need to be approved and submitted by 1 October 2014.

Restricted burning season starts 9 November and the Prohibited Burning Period starts on 21 December 2014.

If you have any concerns regarding fuel hazard reduction burns, firebreaks or variations please contact your area Fire Control Officer or Rob Bootsma at the Shire Office on 9756 1018.

### Green Bag Trial

The Green Bag Evacuation trial aims to make it easier to identify people who have self evacuated in the event of a fire or other emergency.

On 21 September there was a presentation to the chosen communities for the trial of Jalbarragup and North Nannup. Staff members from DPaW, Department of Fire and Emergency Services (DFES) and the Shire of Nannup were in attendance to answer questions relating to the Trial and other fire related issues within their communities. If you missed the presentation and would like to know more please call Rob Bootsma at the Shire Office on 9756 1018.

### Prescribed burns

DPaW have conducted some prescribed burns this spring with more prescribed burns planned. Local Volunteer Bush Fire brigades have been involved with burns and have assisted DPaW where possible.

Ordinary Council Meetings Held: 4.15pm 4th Thursday of each month  
Agendas and Minutes can be obtained from our website on [www.nannup.wa.gov.au](http://www.nannup.wa.gov.au) or email [nannup@nannup.wa.gov.au](mailto:nannup@nannup.wa.gov.au) for a free copy to be emailed to you each month.

Upcoming meetings: 23 October, 27 November, no December meeting

PO Box 11 Nannup WA 6275 • [nannup@nannup.wa.gov.au](mailto:nannup@nannup.wa.gov.au) • [www.nannup.wa.gov.au](http://www.nannup.wa.gov.au) • T:(08)9756 1018

### President

Cr Tony Dean 9756 0680

### Deputy President

Cr Robin Mellema 9756 1156

### Councillors

Cr Charles Gilbert 9756 1184

Cr Bob Longmore 9756 0308

Cr Joan Lorkiewicz 9756 1129

Cr Anne Slater 9756 1997

Cr Norm Steer 9756 1597

### Tip Hours

8-1 pm  
Monday,  
Tuesday  
Saturday

Closed  
Wednesday

1-5 pm  
Thursday  
Friday  
Sunday



# Nannup Community



## Community Bus

Over the years there has been much discussion about Nannup having a community bus. The sustainability and logistical issues of management, housing, drivers and cost has always prevented the project from coming to fruition.

At the August meeting Council endorsed the Community Bus Feasibility Plan. This was developed using consultation gathered since 2002, results of the 'Nannup Connect' Pilot Program and from information provided by regional Shires.

The timeframe now until January 2015 is to undertake community consultation and seek financial support from the community. To kick this off the Youth Advisory Council has pledged \$1,000 and the Community Op Shop has donated \$836.27 from 2013 sales. An account has been established at the Shire if anyone would like to make a donation. Community support is requested with fundraising and letters of support.

In January 2015 a funding application will be submitted to actually purchase the bus and to construct the housing solution.

A working party will be established to guide the process and to ensure that the community have ownership of the project. If you would like to contribute and be part of this, please contact Louise Stokes on 9756 1018.

## \*\* Career Opportunity \*\*

We are looking for a trainee for 2015 with a positive attitude and keen to commit to a traineeship for a period of 12 months, to learn customer service and administration skills while achieving a Certificate IV in Business. This is a great opportunity to get a wide range of skills that will enhance your future employment prospects and you will be paid while you learn!

Interested?

For information packs and questions please contact Evelyn Patman on; [evelyn.patman@nannup.wa.gov.au](mailto:evelyn.patman@nannup.wa.gov.au) or 9756 1018.

## Premier's Australia Day Awards

2015 Premier's Australia Day Active Citizenship Award Nominations are currently being sought for the Premier's Australia Day Active Citizenship Awards.

Nomination forms which include the eligibility/selection criteria are available at the Nannup Shire Office front desk and at the Nannup Community Resource Centre.

Nominations CLOSE on FRIDAY 21 NOVEMBER.

Categories are as follows:

- Premier's Australia Day Active Citizenship Award for a person of 25 years or older.
- Premier's Australia Day Active Citizenship Award for a person of 25 years or under.
- Premier's Australia Day Active Citizenship Award for a community group or event.
- Please return nomination forms to the staff at the Nannup Shire Front Desk.

## Kidsport Vouchers

Kidsport \$200 vouchers are still available in Nannup. Each child aged between 5-18 years may qualify for assistance towards their club fees.

Summer Sports that qualify in Nannup include:

Badminton, Basketball, Trapeze, Thumpboxing, Karate and Tee Ball.

Even if you play sport in another town you may qualify.



Please contact Louise Stokes at the Shire on 9756 1018 for more information.

Application forms are available online at [www.dsr.wa.gov.au](http://www.dsr.wa.gov.au), at the Shire and School. Once completed, please return forms to the Shire.

If you are involved in a sport that is not listed above and would like your club to be registered in this program, please contact Louise Stokes at the Shire.



# Nannup Community



## Youth Count me in Program

For the past 2 years we have had funding from Disability Services Commission to run the Count Me In project.

Count Me In's vision is that 'All people live in welcoming communities that facilitate citizenship, friendship, mutual support and a fair go for everyone'.

Thanks to a Steering committee and their amazing ideas and to supervisors and support workers who helped with the success of the program, the Shire of Nannup was able to run a wide variety of activities during this time with great feedback on them including;

- Rhyme Time in the library
- After School Art
- Family Fun Day annual event
- School Holiday programs
- Adventure camps
- Creation of a youth space behind Town Hall
- YAC Christmas Party
- National Youth Week

Thank you to everyone who has participated. These programs will continue and we look forward to your involvement.



## Proposed Roadworks on East Nannup Road



Council has included in the 2014 / 2015 work program to widen and seal the remaining gravel section of East Nannup Road, to the junction of Gold Gully Road.

East Nannup Road, and continuation to Gold Gully Road is a beautiful drive through that area of the shire. Over the past few years this drive has been attracting more visiting traffic also enjoying the scenery along this route. As with many areas in the South West, more traffic also brings the necessity to provide a safer journey for our residents and visitors.

The proposed works on East Nannup Road this year, will consist of reshaping and adding to the existing gravel surface, widening where required to achieve a minimum 6m wide bitumen surface, and improving the roadside drainage. This works is programmed for October and November 2014.

Shire staff carried out a thorough investigation of the works before putting the proposed scope to the Council for consideration. The investigation included assessing the dangerous or unsafe trees which needed to be removed to complete the proposed works.

Some of the reasons why trees are being removed are;

- Tree grown into the roadside drain
- Distance between tree and property boundary will not allow safe travel width for 2 way traffic
- Tree leaning towards road dropping large branches
- Tree is dead and unsafe or leaning towards road


The tops of the trees will be disposed by burning at a safe time, and a majority of the main timber has been offered to the Forest Commission and the contractor for reuse.

All reasonable effort has been made to selectively address the unsafe trees on this project.





# YAC Page

Spring School Holiday Program  Shire of Nannup



## RE -Cycle Art Project

Friday 3rd October– Rec Centre 10am-11:30am Cost \$5

Using recycled mediums to create artistic ambience for the arrival of the cyclists and displayed over the weekend. This workshop will be fun and creative so come on down to the Recreation Centre

Please register at the Shire or you can try your luck and just turn up.  
Cost includes art supplies and morning tea.

## YAC Movie Night

Friday 3rd October - Youth Space Cost \$5

First session 12 years and under Start 4:45 pm Finish 6:15pm

This will be a new release PG or G movie. Parents can you please come and sign your children in and pick them up if you do not wish to join us for the movie. We will provide snacks and supervision

Second session 13 years and older Start 6:30pm Finish around 9pm

This will be a new release M movie. Parents please do not send younger children to this session. Please arrange for your child to be picked up and let us know if they have any dietary requirements. We will provide snacks and supervision.



## Games Day

Wednesday 9th —Youth Space - 2pm-5pm Cost \$5

Come to the Youth Space for an afternoon of competition and fun as we bring out all the old favourite games to suit everyone. There will be the chance to play a variety of games with friends!



## Birdhouse Workshop

Thursday 10th October - Youth Space 10am –12 noon Cost \$15

Spring time is here and the birds are singing - it's time to get out the hammer and paint. Come along to this workshop and make your own pre-fabricated birdhouse. Build it, paint it, then take it home to put in a tree and let the birds move on in.

There are limited kits so get your name on the registration form at the Shire.





storytime

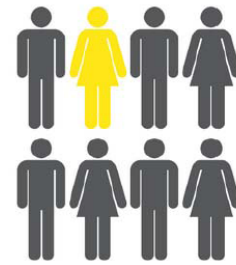
When: Tuesday 9:30




Come down to the Nannup Library on Tuesday morning for Fantastic story telling as well as interactive activities!



Ray White **Know How** to reach more buyers than anyone else



What can Ray White Nannup do for you that other real estate agencies can't ?

Your property will be on the **4 BIGGEST** Real Estate websites

- Realestate.com.au
- Reiwa.com.au
- Raywhite.com (raywhitenannup.com)
- Domain.com.au

Ray White is the most Googled Real Estate agency in Australia... if you want your property to get the best exposure and attract more buyers contact us.

Head Office



CBD Studio Gallery



Now open in two convenient locations.

## HEAD OFFICE

Distribution, Design and Manufacturing complex

Lot 259 Sexton Way, Nannup (LIA)  
Open 10 a.m. To 5 p.m. Thursday to Monday

And now our new

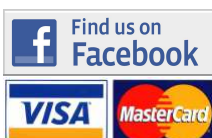
## CBD STUDIO GALLERY

Mega store offering an impressive 50 sq metres of display showroom and floor stock.

Special pieces available to order and immediate sale.

(Ikea eat your heart out)

Open Fridays, Saturdays and Sundays 10 a.m. To 4 p.m.



**9756 0460**

[www.nannupfurnituregallery.com.au](http://www.nannupfurnituregallery.com.au)

